

ilex

OUTDOOR

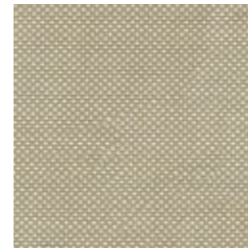
Fabrics
'23 COLLECTION



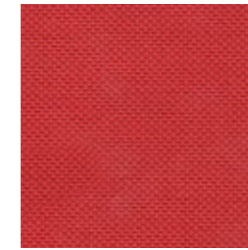
NARIO

GROUP A

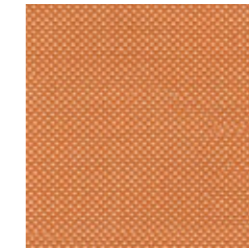
NARIO



02



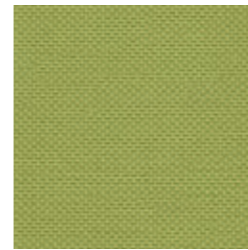
09



15



16



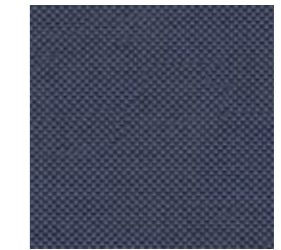
18



24



28



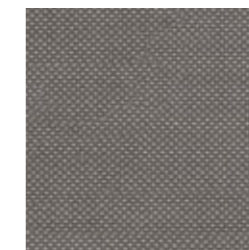
30



32



33



34



100



01



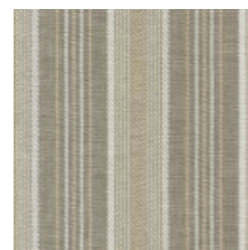
PRODUCT SPECIFICATIONS					
Technical Informations	Value				Test Method
TECHNICAL PROPERTIES					
Width (cm)	140				
Weight (gr/m2)	263				
Composition	% 100 Olefin				
PHYSICAL PROPERTIES					
Pilling	4				EN ISO 12945-2 : 2000 (5000 revs)
Abrasion (martindale)	23.000				EN ISO 12945-2 : 1998
Oil Repellency	3				ISO EN 14419
Spray Test	4-5				BS EN ISO 1920
Flammibility	pass				EN ISO 1021-1
Anti Bacterial	pass				LIS L 1902
FASTNESS					
Technical Informations	LOD	OD	OD+	OD++	Test Method
Light	7	7	7/8	8	BS EN ISO 105-B02
Weathering	6	6/7	7	7/8	BS EN ISO 105-B04
UV	4	4	4/5	5	ASTM G-154 (1200 Hours)
Washing	4/5				BS EN ISO 105-C06 40 C
Sea Water	4/5				BS EN ISO 105-E02
Pool Water	4/5				BS EN ISO 105-E03
Rubbing	4/5				BS EN ISO 105-X12

CARE AND MAINTANCE INSTRUCTIONS

- 1- Remove any residual soil by lightly brushing or scraping the stain by sponging down with water
 - 2- If further cleaning needed, apply a solution with soap an water. Work the solution into stain by lightly scrubbing the area with sponge or very soft bristle brush
 - 3- Remove cleaning solutions with a clean soft towel or sponge to remove the stain and excess cleaning solution. (Repeat step 2 and 3 until stain is removed.)
 - 4- Rinse the a
- Vacuum the fabric prior to cleaning
 Do not be alarmed if stain is not removed after jrst application and removal of cleaning solution
 If the fabric can be removed from furniture it may be cleaned in a mild soap and warm water (40 C°) solution in washing machine and dried in an environment also less then 40 C°.
 Do not steam press or dry in electric or gas dryers. Allow fabric to be air dried naturally
 Do not leave your product after 50 C° outside temperature under directly sunlight
 Results can be vary region by region
 The values for the products my have a varition of +/- %5
 Art Picture is for indoor use only

MIRELLA

MIRELLA



01



09



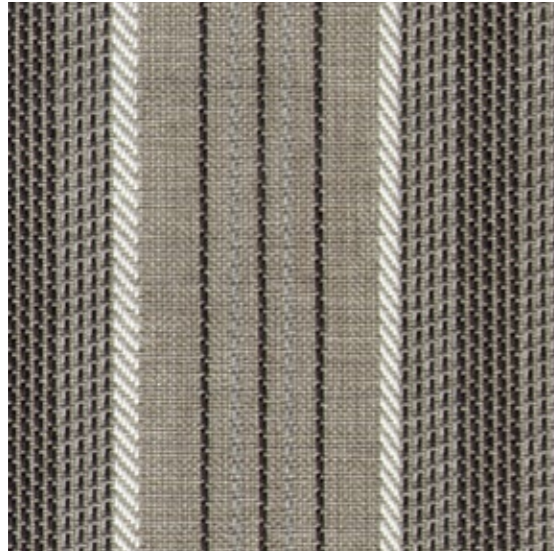
24



23



25



25

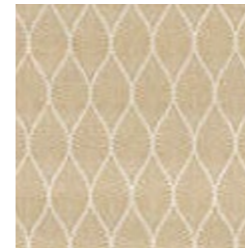
PRODUCT SPECIFICATIONS					
Technical Informations	Value				Test Method
TECHNICAL PROPERTIES					
Width (cm)	140 +/- 1 CM				
Weight (gr/m2)	206				
Composition	% 100 Olefin				
PHYSICAL PROPERTIES					
Pilling	4				EN ISO 12945-2 : 2000 (5000 revs)
Abrasion (martindale)	13.000				EN ISO 12945-2 : 1998
Oil Repellency	3				ISO EN 14419
Spray Test	4-5				BS EN ISO 1920
Flammibility	pass				EN ISO 1021-1
Anti Bacterial	pass				LIS L 1902
FASTNESS					
Technical Informations	LOD	OD	OD+	OD++	Test Method
Light	7	7	7/8	8	BS EN ISO 105-B02
Weathering	6	6/7	7	7/8	BS EN ISO 105-B04
UV	4	4	4/5	5	ASTM G-154 (1200 Hours)
Washing	4/5				BS EN ISO 105-C06 40 C
Sea Water	4/5				BS EN ISO 105-E02
Pool Water	4/5				BS EN ISO 105-E03
Rubbing	4/5				BS EN ISO 105-X12

CARE AND MAINTANCE INSTRUCTIONS

- 1- Remove any residual soil by lightly brushing or scraping the stain by sponging down with water
 - 2- If further cleaning needed, apply a solution with soap and water. Work the solution into stain by lightly scrubbing the area with sponge or very soft bristle brush
 - 3- Remove cleaning solutions with a clean soft towel or sponge to remove the stain and excess cleaning solution. (Repeat step 2 and 3 until stain is removed.)
 - 4- Rinse the area
- Vacuum the fabric prior to cleaning
 Do not be alarmed if stain is not removed after first application and removal of cleaning solution
 If the fabric can be removed from furniture it may be cleaned in a mild soap and warm water (40 C°) solution in washing machine and dried in an environment also less than 40 C°.
 Do not steam press or dry in electric or gas dryers. Allow fabric to be air dried naturally
 Do not leave your product after 50 C° outside temperature under directly sunlight
 Results can be vary region by region
 The values for the products may have a variation of +/- %5
 Art Picture is for indoor use only

SEKOYA

SEKOYA



138



185



190



143



220



161



210



200



183

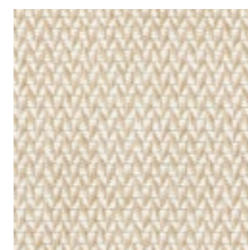
PRODUCT SPECIFICATIONS					
Technical Informations	Value			Test Method	
TECHNICAL PROPERTIES					
Width (cm)	140				
Weight (gr/m2)	430				
Composition	% 51 Acrylic % 49 Pes				
PHYSICAL PROPERTIES					
Pilling	4-5			ISO 12945-2 2000	
Abrasion (martindale)	15.000			BS EN ISO 12947-2 2016	
Spray Test	90			BS EN ISO 1920	
FASTNESS					
Technical Informations	LOD	OD	OD+	OD++	Test Method
Light	7/8	7/8	7/8	7/8	BS EN ISO 105-B02
Weathering	7/8	7/8	7/8	7/8	ASTM G-154 (1200 Hours)

CARE AND MAINTANCE INSTRUCTIONS

- 1- Remove any residual soil by lightly brushing or scraping the stain by sponging down with water
 - 2- If further cleaning needed, apply a solution with soap and water. Work the solution into stain by lightly scrubbing the area with sponge or very soft bristle brush
 - 3- Remove cleaning solutions with a clean soft towel or sponge to remove the stain and excess cleaning solution. (Repeat step 2 and 3 until stain is removed.)
 - 4- Rinse the a
- Vacuum the fabric prior to cleaning
 Do not be alarmed if stain is not removed after first application and removal of cleaning solution
 If the fabric can be removed from furniture it may be cleaned in a mild soap and warm water (40 C°) solution in washing machine and dried in an environment also less then 40 C°.
 Do not steam press or dry in electric or gas dryers. Allow fabric to be air dried naturally
 Do not leave your product after 50 C° outside temperature under directly sunlight
 Results can be vary region by region
 The values for the products my have a varition of +/- %5
 Art Picture is for indoor use only

LIVIO

LIVIO



01



02



03



04



08



14



19



22



24



26



27



28

PRODUCT SPECIFICATIONS					
Technical Informations	Value				Test Method
TECHNICAL PROPERTIES					
Width (cm)	140				
Weight (gr/m2)	355				
Composition	% 100 Olefin				
PHYSICAL PROPERTIES					
Pilling	4-5				EN ISO 12945-2 : 2000 (5000 revs)
Abrasion (martindale)	20.000				EN ISO 12945-2 : 1998
Oil Repellency	3				ISO EN 14419
Spray Test	4-5				BS EN ISO 1920
Flammibility	pass				EN ISO 1021-1
Anti Bacterial	pass				LIS L 1902
FASTNESS					
Technical Informations	LOD	OD	OD+	OD++	Test Method
Light	7	7	7/8	8	BS EN ISO 105-B02
Weathering	6	6/7	7	7/8	BS EN ISO 105-B04
UV	4	4	4/5	5	ASTM G-154 (1200 Hours)
Washing	4/5				BS EN ISO 105-C06 40 C
Sea Water	4/5				BS EN ISO 105-E02
Pool Water	4/5				BS EN ISO 105-E03
Rubbing	4/5				BS EN ISO 105-X12

CARE AND MAINTANCE INSTRUCTIONS

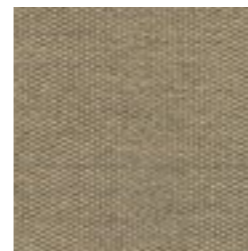
- 1- Remove any residual soil by lightly brushing or scraping the stain by sponging down with water
 - 2- If further cleaning needed, apply a solution with soap and water. Work the solution into stain by lightly scrubbing the area with sponge or very soft bristle brush
 - 3- Remove cleaning solutions with a clean soft towel or sponge to remove the stain and excess cleaning solution. (Repeat step 2 and 3 until stain is removed.)
 - 4- Rinse the a
- Vacuum the fabric prior to cleaning
 Do not be alarmed if stain is not removed after first application and removal of cleaning solution
 If the fabric can be removed from furniture it may be cleaned in a mild soap and warm water (40 C°) solution in washing machine and dried in an environment also less then 40 C°.
 Do not steam press or dry in electric or gas dryers. Allow fabric to be air dried naturally
 Do not leave your product after 50 C° outside temperature under directly sunlight
 Results can be vary region by region
 The values for the products may have a variation of +/- %5
 Art Picture is for indoor use only



PLAIN MELENGE

GROUP B

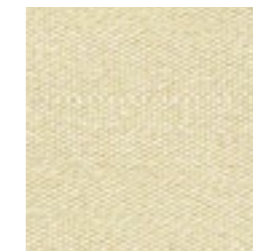
PLAIN MELENGE



PMEL16



PMEL18



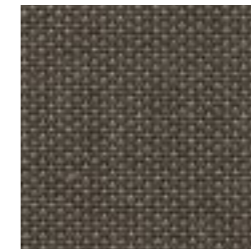
PMEL20



PMEL70



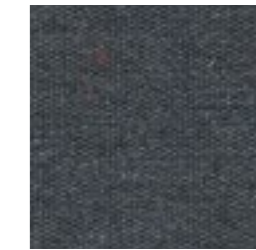
PMEL72



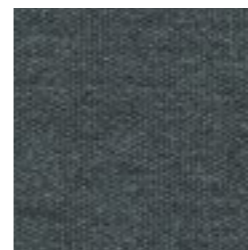
PMEL79



PMEL583



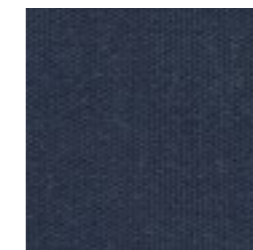
PMEL690



PMEL691



PMEL693



PMEL694



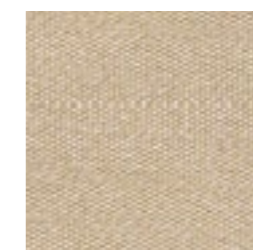
PMEL783



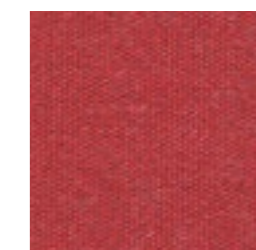
PMEL833



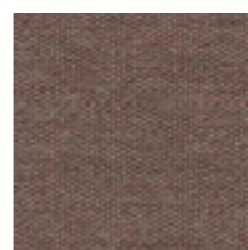
PMEL834



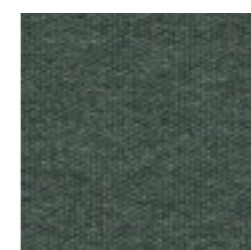
PMEL835



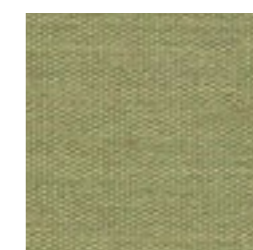
PMEL870



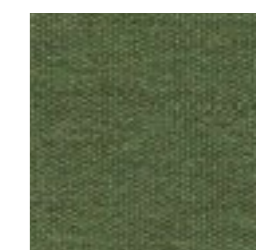
PMEL872



PMEL874



PMEL875



PMEL876

Colors may slightly vary due to photographic lighting sources or your monitor settings.

PLAIN MELENGE



PMEL879



PMEL882

PLAIN MELENGE

PRODUCT SPECIFICATIONS		
Technical Informations	Value	Test Method
TECHNICAL PROPERTIES		
Width (cm)	137	EN 1773
Weight (gr/m2)	240	ISO 3801
Composition	100% Solution Dyed Acrylic	
PHYSICAL PROPERTIES		
Abrasion (martindale)	15.000	ISO 12947-2
Oil Repellency	5-8	ISO 14419
Spray Test	5-5	ISO 4920
Flame Resistance	pass	CAL TB 117 - 2013 Section 1
Water Repellent	pass	
Anti Stain	pass	
Anti Mould	pass	
Guarantee	5 Years	
FASTNESS		
Technical Informations	Value	Test Method
Weathering	7/8	ISO 105 B04
UV	7/8	ISO 105 B02
Washing	7/8	ISO 105 C06

CARE AND MAINTANCE INSTRUCTIONS

Features

Water-repellent fabric with anti characterised by its design and fineness, by the soft touch and can be used in- and outdoor.

Applications

Indoor and outdoor furniture: upholstery, cushions, draperies e sheers. Suitable also for marine upholstery

Warranty

Irisun Living fabrics are guaranteed for 5 years concerning the UV resistance and the colour fastness. The warranty is valid in case of respect of the application of the fabric and of the instructions for care and cleaning.

TELMA

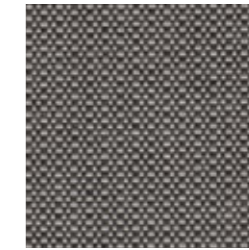
TELMA



22



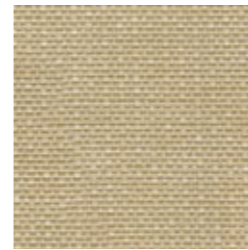
26



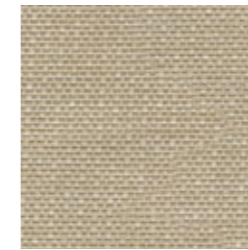
28



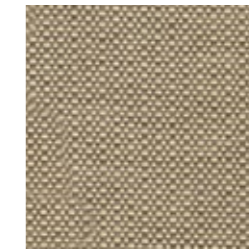
101



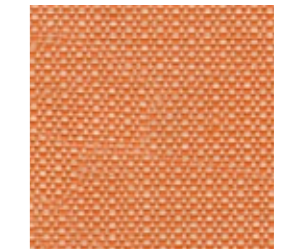
102



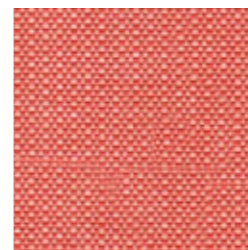
103



104



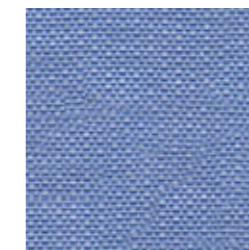
108



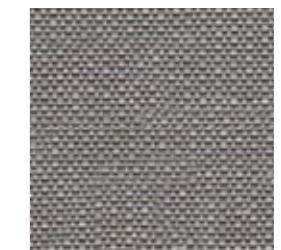
109



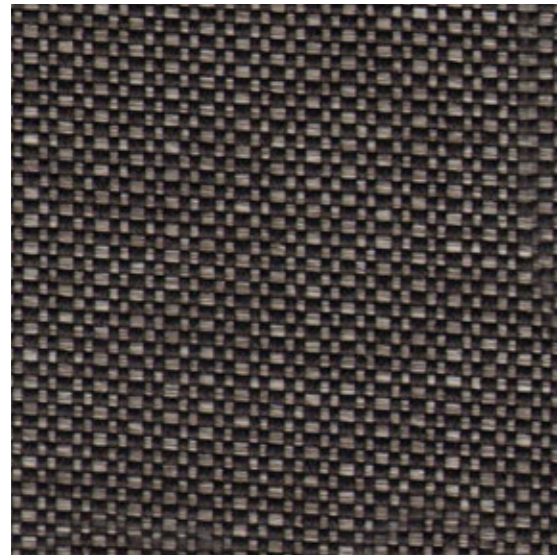
114



122



126



128

PRODUCT SPECIFICATIONS					
Technical Informations	Value				Test Method
TECHNICAL PROPERTIES					
Width (cm)	140				
Weight (gr/m2)	343				
Composition	% 100 Olefin				
PHYSICAL PROPERTIES					
Pilling	4-5				EN ISO 12945-2 : 2000 (5000 revs)
Abrasion (martindale)	50.000				EN ISO 12945-2 : 1998
Oil Repellency	3				ISO EN 14419
Spray Test	4-5				BS EN ISO 1920
Flammibility	pass				EN ISO 1021-1
Anti Bacterial	pass				LIS L 1902
FASTNESS					
Technical Informations	LOD	OD	OD+	OD++	Test Method
Light	7	7	7/8	8	BS EN ISO 105-B02
Weathering	6	6/7	7	7/8	BS EN ISO 105-B04
UV	4	4	4/5	5	ASTM G-154 (1200 Hours)
Washing	4/5				BS EN ISO 105-C06 40 C
Sea Water	4/5				BS EN ISO 105-E02
Pool Water	4/5				BS EN ISO 105-E03
Rubbing	4/5				BS EN ISO 105-X12

CARE AND MAINTANCE INSTRUCTIONS

- 1- Remove any residual soil by lightly brushing or scraping the stain by sponging down with water
 - 2- If further cleaning needed, apply a solution with soap and water. Work the solution into stain by lightly scrubbing the area with sponge or very soft bristle brush
 - 3- Remove cleaning solutions with a clean soft towel or sponge to remove the stain and excess cleaning solution. (Repeat step 2 and 3 until stain is removed.)
 - 4- Rinse the a
- Vacuum the fabric prior to cleaning
 Do not be alarmed if stain is not removed after first application and removal of cleaning solution
 If the fabric can be removed from furniture it may be cleaned in a mild soap and warm water (40 C°) solution in washing machine and dried in an environment also less then 40 C°.
 Do not steam press or dry in electric or gas dryers. Allow fabric to be air dried naturally
 Do not leave your product after 50 C° outside temperature under directly sunlight
 Results can be vary region by region
 The values for the products may have a variation of +/- %5
 Art Picture is for indoor use only



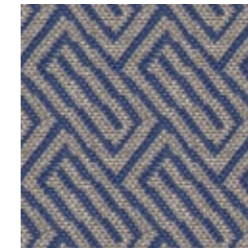
VERO

GROUP B

VERO



10



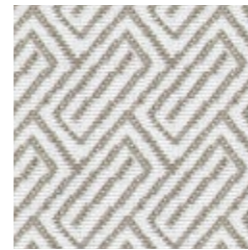
23



24



25



101



109

PRODUCT SPECIFICATIONS					
Technical Informations	Value				Test Method
TECHNICAL PROPERTIES					
Width (cm)	140				
Weight (gr/m2)	318				
Composition	% 100 Olefin				
PHYSICAL PROPERTIES					
Pilling	4				EN ISO 12945-2 : 2000 (5000 revs)
Abrasion (martindale)	18.000				EN ISO 12945-2 : 1998
Oil Repellency	3				ISO EN 14419
Spray Test	4-5				BS EN ISO 1920
Flammibility	pass				EN ISO 1021-1
Anti Bacterial	pass				LIS L 1902
FASTNESS					
Technical Informations	LOD	OD	OD+	OD++	Test Method
Light	7	7	7/8	8	BS EN ISO 105-B02
Weathering	6	6/7	7	7/8	BS EN ISO 105-B04
UV	4	4	4/5	5	ASTM G-154 (1200 Hours)
Washing	4/5				BS EN ISO 105-C06 40 C
Sea Water	4/5				BS EN ISO 105-E02
Pool Water	4/5				BS EN ISO 105-E03
Rubbing	4/5				BS EN ISO 105-X12

CARE AND MAINTANCE INSTRUCTIONS

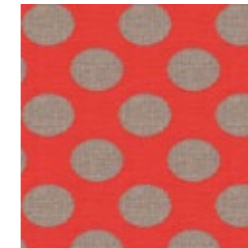
- 1- Remove any residual soil by lightly brushing or scraping the stain by sponging down with water
 - 2- If further cleaning needed, apply a solution with soap and water. Work the solution into stain by lightly scrubbing the area with sponge or very soft bristle brush
 - 3- Remove cleaning solutions with a clean soft towel or sponge to remove the stain and excess cleaning solution. (Repeat step 2 and 3 until stain is removed.)
 - 4- Rinse the a
- Vacuum the fabric prior to cleaning
 Do not be alarmed if stain is not removed after first application and removal of cleaning solution
 If the fabric can be removed from furniture it may be cleaned in a mild soap and warm water (40 C°) solution in washing machine and dried in an environment also less than 40 C°.
 Do not steam press or dry in electric or gas dryers. Allow fabric to be air dried naturally
 Do not leave your product after 50 C° outside temperature under directly sunlight
 Results can be vary region by region
 The values for the products may have a variation of +/- %5
 Art Picture is for indoor use only

NORAH

NORAH



01



09



10



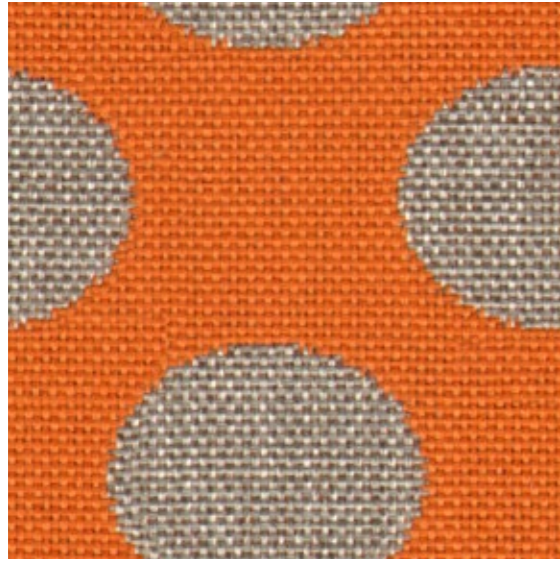
23



24



101



109

PRODUCT SPECIFICATIONS					
Technical Informations	Value				Test Method
TECHNICAL PROPERTIES					
Width (cm)	140				
Weight (gr/m2)	318				
Composition	% 100 Olefin				
PHYSICAL PROPERTIES					
Pilling	4				EN ISO 12945-2 : 2000 (5000 revs)
Abrasion (martindale)	18.000				EN ISO 12945-2 : 1998
Oil Repellency	3				ISO EN 14419
Spray Test	4-5				BS EN ISO 1920
Flammibility	pass				EN ISO 1021-1
Anti Bacterial	pass				LIS L 1902
FASTNESS					
Technical Informations	LOD	OD	OD+	OD++	Test Method
Light	7	7	7/8	8	BS EN ISO 105-B02
Weathering	6	6/7	7	7/8	BS EN ISO 105-B04
UV	4	4	4/5	5	ASTM G-154 (1200 Hours)
Washing	4/5				BS EN ISO 105-C06 40 C
Sea Water	4/5				BS EN ISO 105-E02
Pool Water	4/5				BS EN ISO 105-E03
Rubbing	4/5				BS EN ISO 105-X12

CARE AND MAINTANCE INSTRUCTIONS

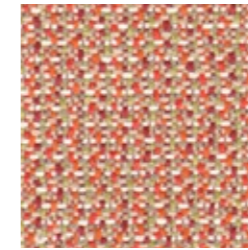
- 1- Remove any residual soil by lightly brushing or scraping the stain by sponging down with water
 - 2- If further cleaning needed, apply a solution with soap and water. Work the solution into stain by lightly scrubbing the area with sponge or very soft bristle brush
 - 3- Remove cleaning solutions with a clean soft towel or sponge to remove the stain and excess cleaning solution. (Repeat step 2 and 3 until stain is removed.)
 - 4- Rinse the area
- Vacuum the fabric prior to cleaning
 Do not be alarmed if stain is not removed after first application and removal of cleaning solution
 If the fabric can be removed from furniture it may be cleaned in a mild soap and warm water (40 C°) solution in washing machine and dried in an environment also less than 40 C°.
 Do not steam press or dry in electric or gas dryers. Allow fabric to be air dried naturally
 Do not leave your product after 50 C° outside temperature under directly sunlight
 Results can be vary region by region
 The values for the products may have a variation of +/- %5
 Art Picture is for indoor use only

MATTEO

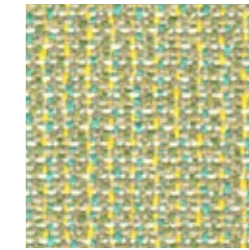
MATTEO



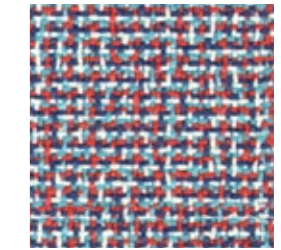
01



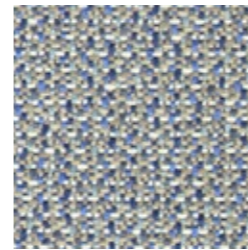
09



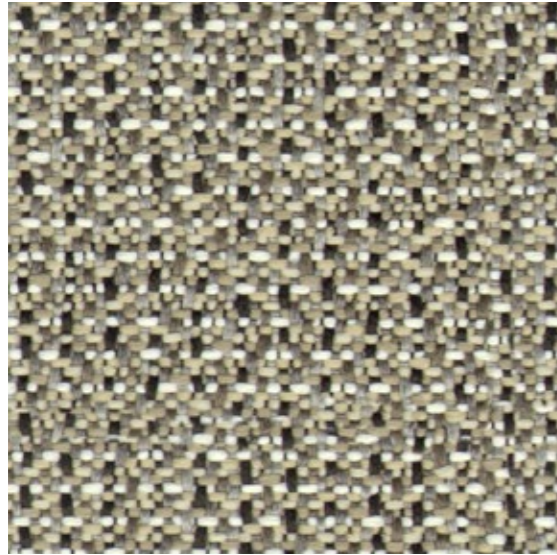
10



23



24



25

PRODUCT SPECIFICATIONS					
Technical Informations	Value				Test Method
TECHNICAL PROPERTIES					
Width (cm)	140				
Weight (gr/m2)	463				
Composition	% 100 Olefin				
PHYSICAL PROPERTIES					
Pilling	5				EN ISO 12945-2 : 2000 (5000 revs)
Abrasion (martindale)	28.000				EN ISO 12945-2 : 1998
Oil Repellency	3				ISO EN 14419
Spray Test	4-5				BS EN ISO 1920
Flammibility	pass				EN ISO 1021-1
Anti Bacterial	pass				LIS L 1902
FASTNESS					
Technical Informations	LOD	OD	OD+	OD++	Test Method
Light	7	7	7/8	8	BS EN ISO 105-B02
Weathering	6	6/7	7	7/8	BS EN ISO 105-B04
UV	4	4	4/5	5	ASTM G-154 (1200 Hours)
Washing	4/5				BS EN ISO 105-C06 40 C
Sea Water	4/5				BS EN ISO 105-E02
Pool Water	4/5				BS EN ISO 105-E03
Rubbing	4/5				BS EN ISO 105-X12

CARE AND MAINTANCE INSTRUCTIONS

- 1- Remove any residual soil by lightly brushing or scraping the stain by sponging down with water
 - 2- If further cleaning needed, apply a solution with soap and water. Work the solution into stain by lightly scrubbing the area with sponge or very soft bristle brush
 - 3- Remove cleaning solutions with a clean soft towel or sponge to remove the stain and excess cleaning solution. (Repeat step 2 and 3 until stain is removed.)
 - 4- Rinse the a
- Vacuum the fabric prior to cleaning
 Do not be alarmed if stain is not removed after first application and removal of cleaning solution
 If the fabric can be removed from furniture it may be cleaned in a mild soap and warm water (40 C°) solution in washing machine and dried in an environment also less then 40 C°.
 Do not steam press or dry in electric or gas dryers. Allow fabric to be air dried naturally
 Do not leave your product after 50 C° outside temperature under directly sunlight
 Results can be vary region by region
 The values for the products may have a variation of +/- %5
 Art Picture is for indoor use only

ilex

ilex.com.tr

