



INDOOR

Fabrics
COLLECTION

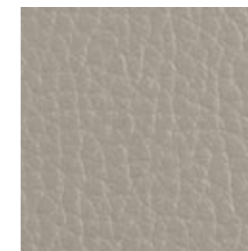


BUGATTI

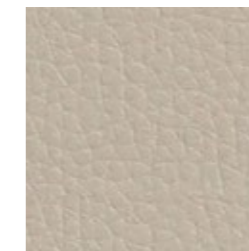
BUGATTI



60460



60495



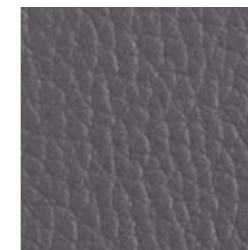
60444



60496



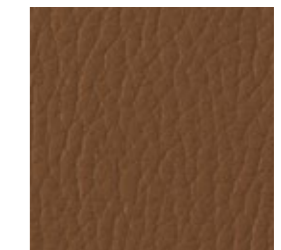
60499



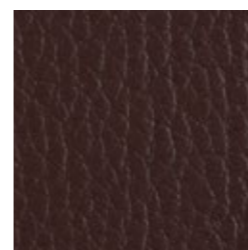
60502



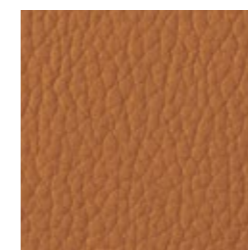
60501



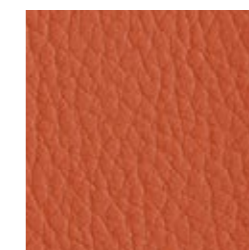
61382



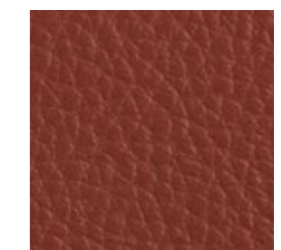
60450



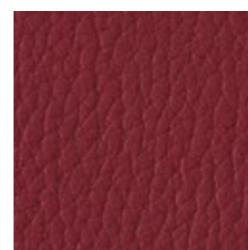
60487



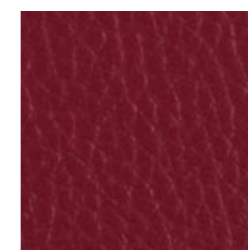
60486



60447



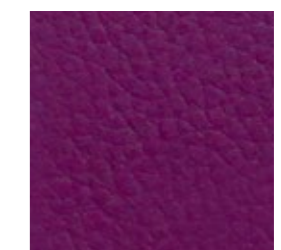
60448



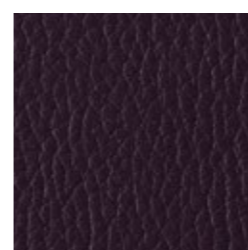
60490



60489



61836



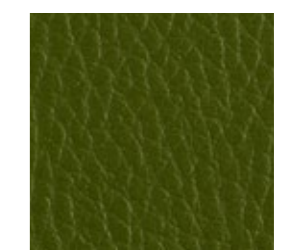
60504



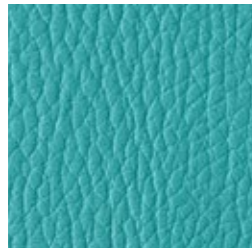
60446



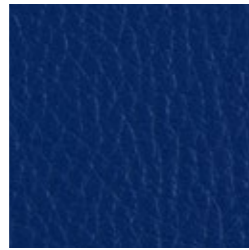
60482



60449



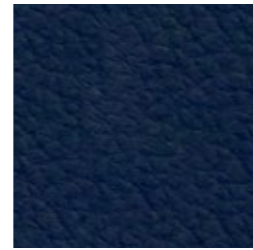
61385-4



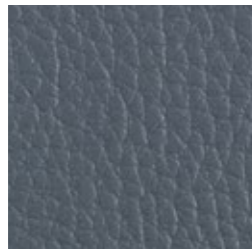
60505



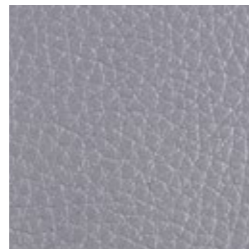
60506



61515



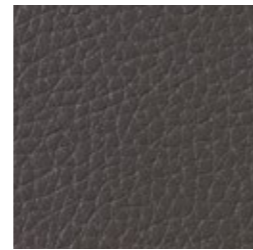
60445



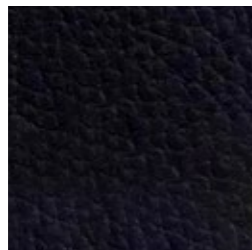
60497



61383



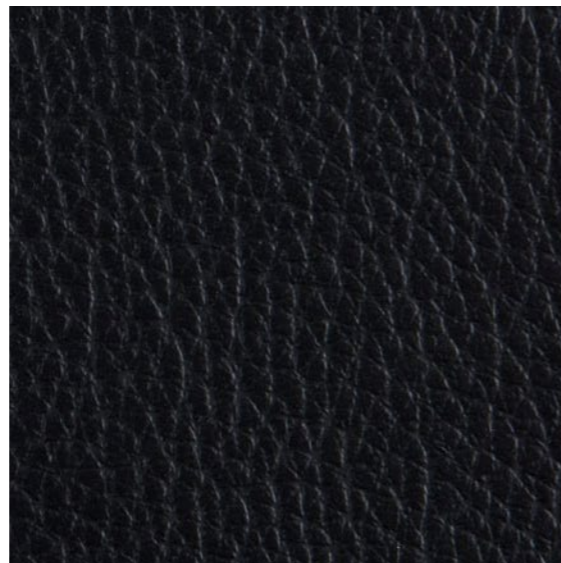
60225



61894



60498



60508

PRODUCT SPECIFICATIONS		
Technical Informations	Value	Test Method
TECHNICAL PROPERTIES		
Composition	81%PVC/3% Acrylic PU/16%Polyester	EN 12127
Weight	650	
Width	140 +- 3	
PHYSICAL PROPERTIES		
Resistance to Abrasion (martindale)	300.000	ISO 12947-2
Weathering UV test	4	ISO 4892-2
Microbial and fungal resistance	degree 0, excellent	ISO 846/AATCC 147
Waterproof	Yes	EN20811
FR STANDARTS		
France	M2	NFP 503,504,505 (optional)
Germany	B1	DIN 4102
Italy	Pass	UNI 9175 and UNI 9177
Europe	Pass	EN 1021-1,2
United Kingdom	Crib 5	BS 5852 (optional)
United Kingdom	Pass	BS 5852 source 0, 1 cig and match
USA	Pass	NFPA 260A/UFAC Class 1
USA	Pass	CAL 117
Marine	Pass	IMO FTPC P8
Aeronautical	Pass	NY/NJ Port authority FAR Part 25.853

Production Specialities

Only valid for Bugatti colour codes.

Care And Cleaning Instructions

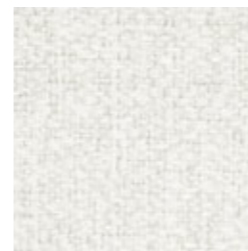
Clean regularly with a damp cloth, use water with a mild soap, no aggressive nor abrasive detergents, no wax. This information is not a guarantee and does not relieve the user from the responsibility of the proper and safe use of the product. Metaliks has no responsibility resulting from the use of such cleaning agents to the vinyl.

Environment And Health:

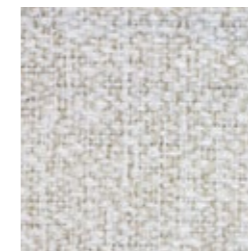
- Oekotex 100 Class IV
- REACH Certified
- Phthalate Free
- Bromine Free No Halogenated FR Chemicals
- Non-Toxic
- No Bisphenol A (BPA)

CREA

CREA



003



012



016



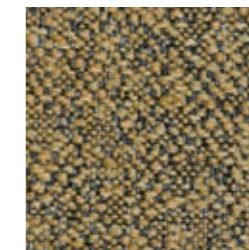
020



033



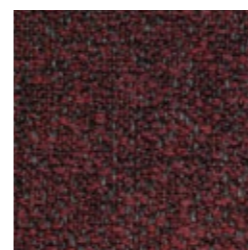
110



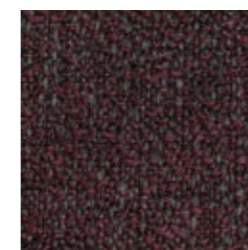
120



130



230



240



252



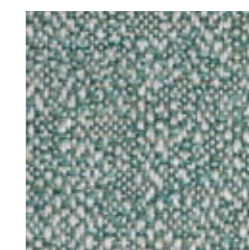
310



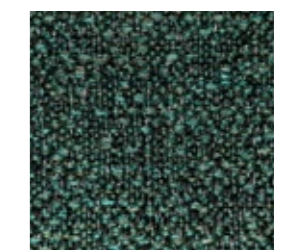
320



410



416



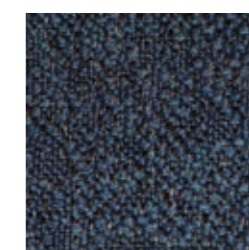
422



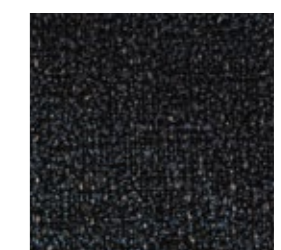
444



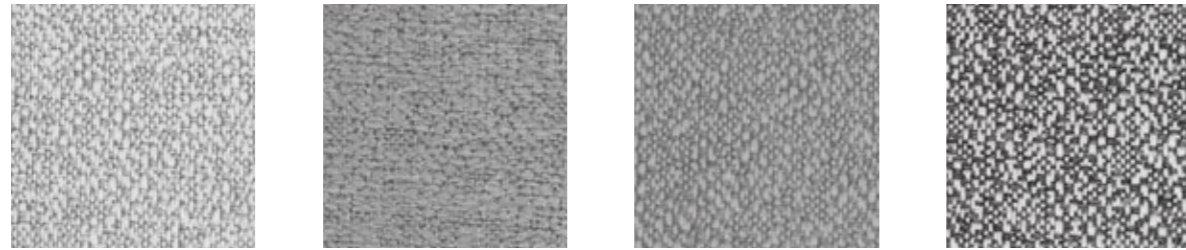
517



560



570

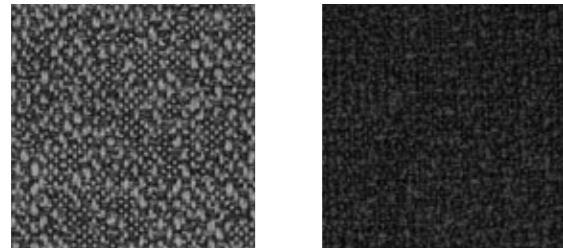


620

630

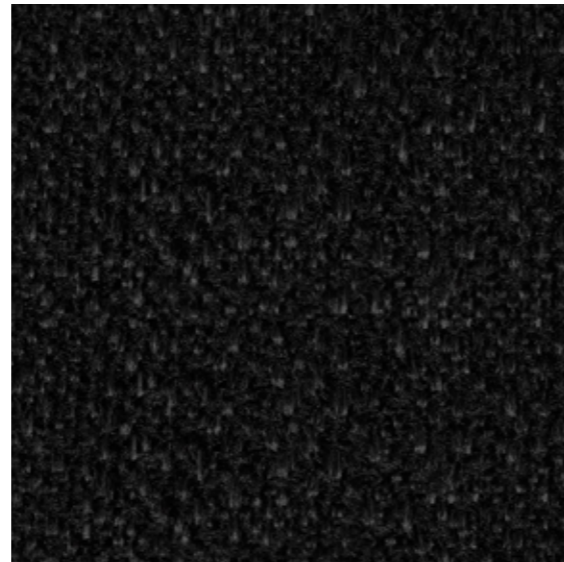
640

650



660

670



901

PRODUCT SPECIFICATIONS		
Technical Informations	Value	Test Method
TECHNICAL PROPERTIES		
Composition	%100 Polyurethane	
Weight	300 ± 10	ISO 2286-2
Width	140 ± 3	
PHYSICAL PROPERTIES		
Resistance to Abrasion (martindale)	>30.000	ISO 12947
Colour Fastness To Light (BW)	4/5	ISO 105-B02
Color Fastness To Rubbing (GS)	Wet > 4 Dry > 4	ISO 105-X12

Liquid Stains:

Blot the liquid stain gently with a high-absorbent material. Pat dry the area gently with a dry material to remove the remaining humidity (cotton cloth,paper towel, etc...), If the stain from the spill remains, remove the stain with a soapy cloth without diffusing the stain. After each rubbing motion, refresh the clean soapy cloth in order to prevent soiling.

Solid Particles:

Remove the excess soiling with ultimate care without diffusing Remove the solid particle from the fabric surface with the help of a soft spatula. To remove dust, use a vacuum cleaner or a soft brush The remaining stains should be removed by rubbing with a soapy cloth in circular motion.

Ball-point pen and similar difficult stains :

Dampen a clean cotton cloth in a white soap solution. Rub the stain off gently. Clean the surface with the damp cloth and leave the fabric for drying

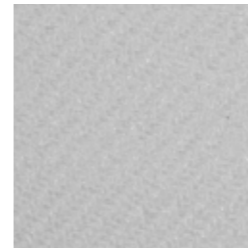
Alcohol derives

Petroleum and alkali based solvents should not be used for cleaning. After all cleaning processes, the drying should be done with a low temperature blow dryer in large circular motion or the fabric should be left for natural drying. After drying, misoriented and damaged piles should be fixed with a soft brush.

Valid for all colors. Red colors may have less color fastness to rubbing

BASEL

BASEL



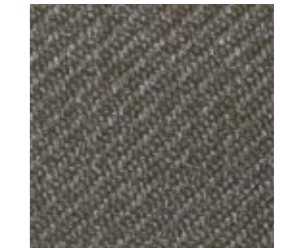
001



003



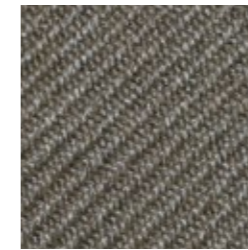
004



020



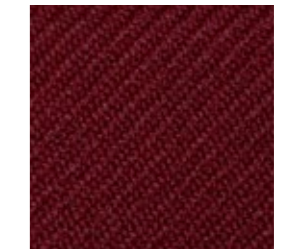
030



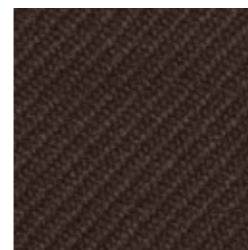
040



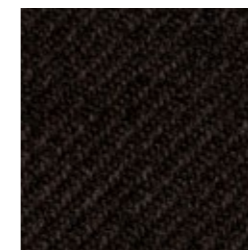
120



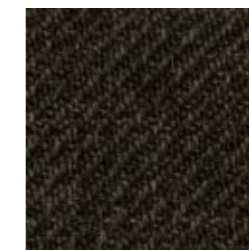
220



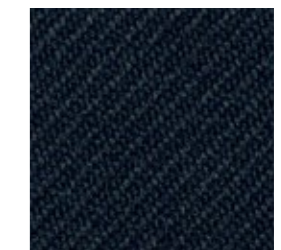
340



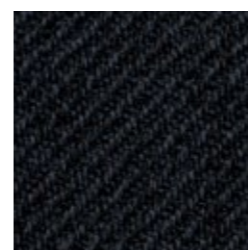
360



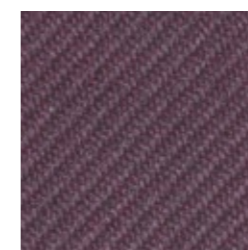
430



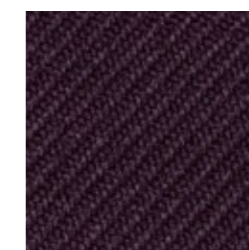
540



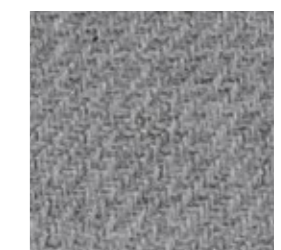
550



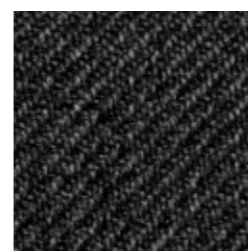
570



580



620



650



901

PRODUCT SPECIFICATIONS		
Technical Informations	Value	Test Method
TECHNICAL PROPERTIES		
Composition	%95-96 Polyurethane, %4-5 Polyester	
Weight	285 ± %5	ISO 2286-2
Width	140 ± 2	
PHYSICAL PROPERTIES		
Resistance to Abrasion (martindale)	>50.000	ISO 5470-02
Colour Fastness To Light (BW)	4/5	ISO 105-B02
Color Fastness To Rubbing (GS)	Wet > 4 Dry > 4	ISO 105-X12

Liquid Stains:

Blot the liquid stain gently with a high-absorbent material. Pat dry the area gently with a dry material to remove the remaining humidity (cotton cloth,paper towel, etc...), If the stain from the spill remains, remove the stain with a soapy cloth without diffusing the stain. After each rubbing motion, refresh the clean soapy cloth in order to prevent soiling.

Solid Particles:

Remove the excess soiling with ultimate care without diffusing Remove the solid particle from the fabric surface with the help of a soft spatula. To remove dust, use a vacuum cleaner or a soft brush The remaining stains should be removed by rubbing with a soapy cloth in circular motion.

Ball-point pen and similar difficult stains :

Dampen a clean cotton cloth in a white soap solution. Rub the stain off gently. Clean the surface with the damp cloth and leave the fabric for drying

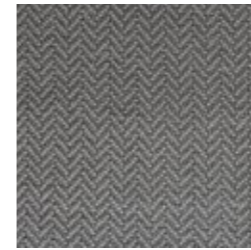
Alcohol derives

Petroleum and alkali based solvents should not be used for cleaning. After all cleaning processes, the drying should be done with a low temperature blow dryer in large circular motion or the fabric should be left for natural drying. After drying, misoriented and damaged piles should be fixed with a soft brush.

Valid for all colors. Red colors may have less color fastness to rubbing

LUGANO

LUGANO



040



120



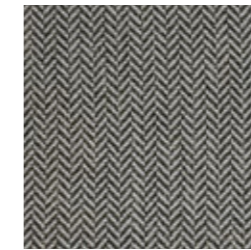
220



340



360



430



540



550



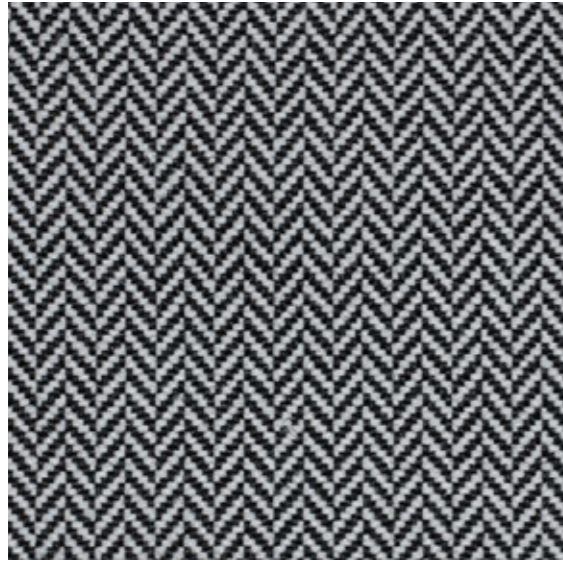
570



580



620



901

PRODUCT SPECIFICATIONS		
Technical Informations	Value	Test Method
TECHNICAL PROPERTIES		
Composition	%95-96 Polyurethane, %4-5 Polyester	
Weight	285 ± %5	ISO 2286-2
Width	140 ± 3	
PHYSICAL PROPERTIES		
Resistance to Abrasion (martindale)	>50.000	ISO 12947
Colour Fastness To Light (BW)	4/5	ISO 105-B02
Color Fastness To Rubbing (GS)	Wet > 4 Dry > 4	ISO 105-X12

Liquid Stains:

Blot the liquid stain gently with a high-absorbent material. Pat dry the area gently with a dry material to remove the remaining humidity (cotton cloth,paper towel, etc....). If the stain from the spill remains, remove the stain with a soapy cloth without diffusing the stain. After each rubbing motion, refresh the clean soapy cloth in order to prevent soiling.

Solid Particles:

Remove the excess soiling with ultimate care without diffusing Remove the solid particle from the fabric surface with the help of a soft spatula. To remove dust, use a vacuum cleaner or a soft brush The remaining stains should be removed by rubbing with a soapy cloth in circular motion.

Ball-point pen and similar difficult stains :

Dampen a clean cotton cloth in a white soap solution. Rub the stain off gently. Clean the surface with the damp cloth and leave the fabric for drying

Alcohol derives

Petroleum and alkali based solvents should not be used for cleaning. After all cleaning processes, the drying should be done with a low temperature blow dryer in large circular motion or the fabric should be left for natural drying. After drying, misoriented and damaged piles should be fixed with a soft brush.

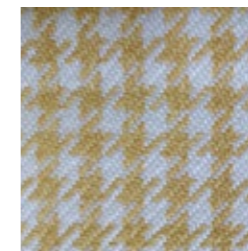
Valid for all colors. Red colors may have less color fastness to rubbing

VALS

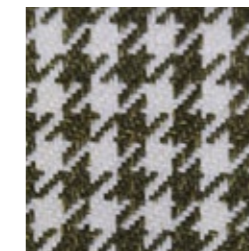
VALS



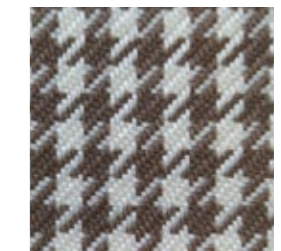
040



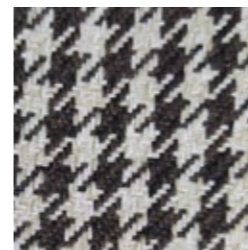
120



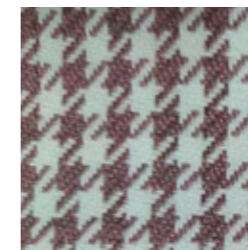
430



340



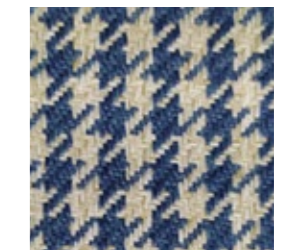
360



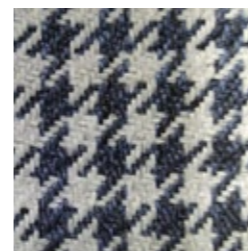
570



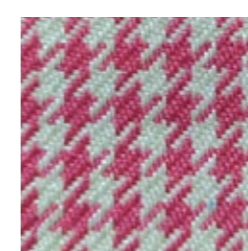
580



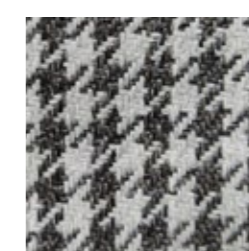
540



550



220



620



901

PRODUCT SPECIFICATIONS		
Technical Informations	Value	Test Method
TECHNICAL PROPERTIES		
Composition	%95-96 Polyurethane, %4-5 Polyester	
Weight	285 ± %5	ISO 2286-2
Width	140 ± 3	
PHYSICAL PROPERTIES		
Resistance to Abrasion (martindale)	>50.000	ISO 12947
Colour Fastness To Light (BW)	4/5	ISO 105-B02
Color Fastness To Rubbing (GS)	Wet > 4 Dry > 4	ISO 105-X12

Liquid Stains:

Blot the liquid stain gently with a high-absorbent material. Pat dry the area gently with a dry material to remove the remaining humidity (cotton cloth,paper towel, etc....), If the stain from the spill remains, remove the stain with a soapy cloth without diffusing the stain. After each rubbing motion, refresh the clean soapy cloth in order to prevent soiling.

Solid Particles:

Remove the excess soiling with ultimate care without diffusing Remove the solid particle from the fabric surface with the help of a soft spatula. To remove dust, use a vacuum cleaner or a soft brush The remaining stains should be removed by rubbing with a soapy cloth in circular motion.

Ball-point pen and similar difficult stains :

Dampen a clean cotton cloth in a white soap solution. Rub the stain off gently. Clean the surface with the damp cloth and leave the fabric for drying

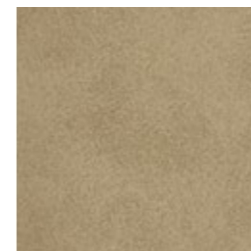
Alcohol derives

Petroleum and alkali based solvents should not be used for cleaning. After all cleaning processes, the drying should be done with a low temperature blow dryer in large circular motion or the fabric should be left for natural drying. After drying, misoriented and damaged piles should be fixed with a soft brush.

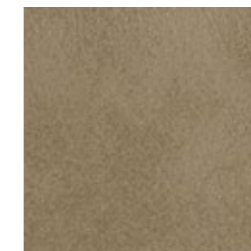
Valid for all colors. Red colors may have less color fastness to rubbing

AMAZON

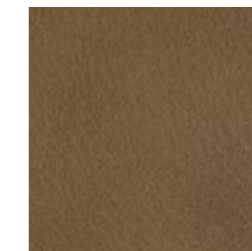
AMAZON



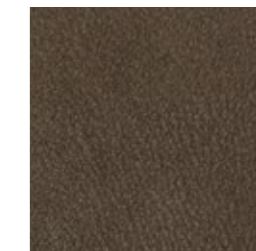
AMAZON 010



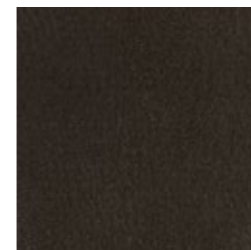
AMAZON 020



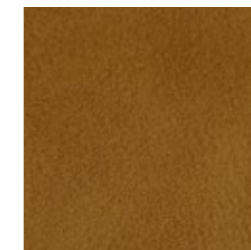
AMAZON 040



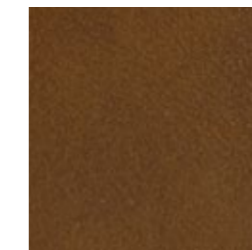
AMAZON 050



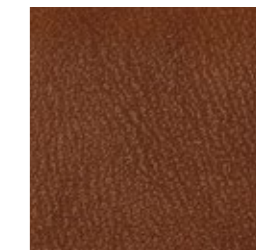
AMAZON 060



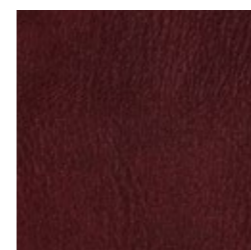
AMAZON 120



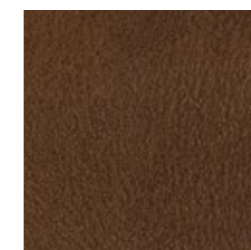
AMAZON 300



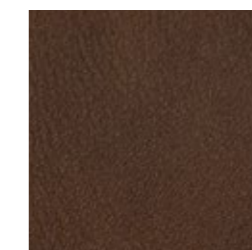
AMAZON 260



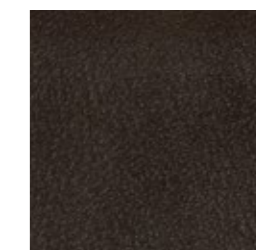
AMAZON 250



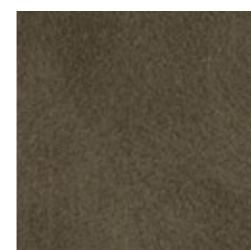
AMAZON 320



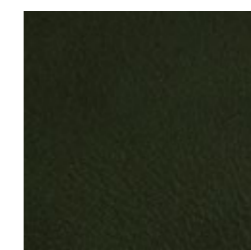
AMAZON 326



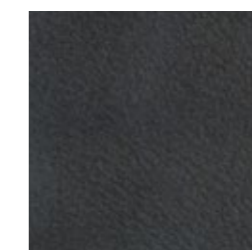
AMAZON 337



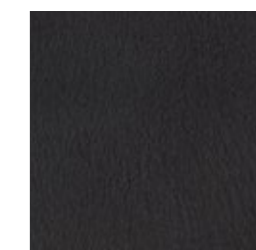
AMAZON 400



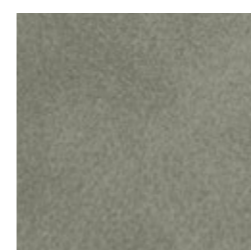
AMAZON 430



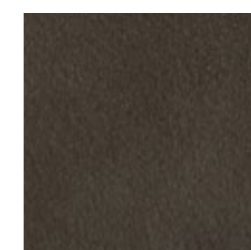
AMAZON 520



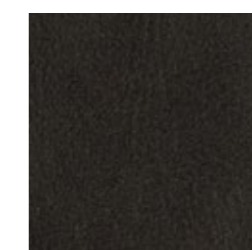
AMAZON 540



AMAZON 605



AMAZON 620



AMAZON 650

AMAZON



AMAZON 901

AMAZON

PRODUCT SPECIFICATIONS		
Technical Informations	Value	Test Method
TECHNICAL PROPERTIES		
Composition	%2 Polyurethane, %98 Vinyl	
Weight (gr/m2)	550 ± %40	ISO 2286-2
Width (cm)	140 ± 3	
Roll Length (m)	35	
PHYSICAL PROPERTIES		
Resistance to Abrasion (Martindale)	>100.000	ISO 5470-02
Weathering UV test	yes	
Antimicrobial	yes	
FR STANDARTS		
Europe	pass	EN 1021 Part 1 and Part 2

Product Characteristics

Only valid for Amazon colour codes.

AZO-DYES, HEAVY METALS, PESTICIDES, PCP/TeCP, FORMALDEHYDE, PCB ARE WITHIN ALLOWED LIMITS IN PRODUCTS DUE TO EKO-TEXSTANDART 100.

In Case of Coffe, Tea, Etc Spills:

Use an absorbent cloth or piece of paper. Do not rub! Let the stain be absorbed until it is removed from the material surface. Rub very gently with a tissue paper applying gentle circular movements to remove any remaining humidity.

Oil Stains:

After rubbing the surface gently using a soapy cotton cloth, it must be rubbed one more time and dried using a soapy cotton cloth, it must be rubbed one more time and dried using a clean humid cloth.

In Case Of Dust

To remove dust from the surface, it is advised to use a vacuum cleaner or a soft brush. Protect from direct sunlight. Do not use bleach for cleaning.

ATHENA

ATHENA



1152



1153



1155



1162



1173



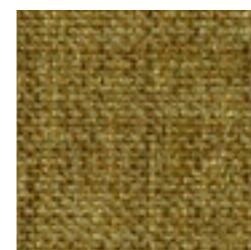
1228



1144



1229



1192



1206



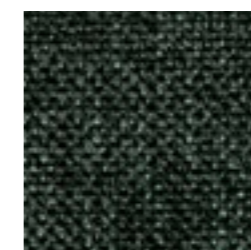
1199



1187



1132



1224



1179



1500



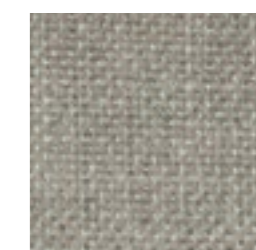
1188



1190

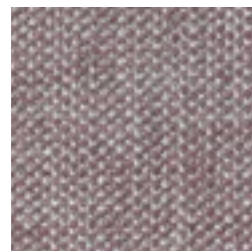


1225

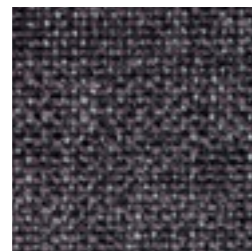


1156

ATHENA



1233



1226



1203



1204



1170



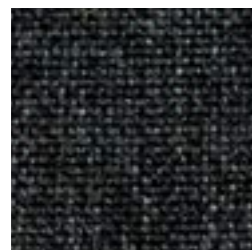
1171



1141



1175



1140



1198

ATHENA

PRODUCT SPECIFICATIONS		
Technical Informations	Value	Test Method
TECHNICAL PROPERTIES		
Composition	%60 Polyester %40 Cotton	
Weight (gr/m2)	440 ± 20	ISO 2286-2
Width (cm)	140 ± 2	
PHYSICAL PROPERTIES		
Resistance to Abrasion (Martindale)	>40.000	ISO 12947-1
Colour Fastness To Light (BW)	4/5	ISO 105-B02
Color Fastness To Rubbing (GS)	Wet >5 Dry >5	ISO 105-X12

Producy Characteristics

Liquid Stains:

Blot the liquid stain gently with a high-absorbent material. Pat dry the area gently with a dry material to remove the remaining humidity (cotton cloth,paper towel, etc....). If the stain from the spill remains, remove the stain with a soapy cloth without diffusing the stain. After each rubbing motion, refresh the clean soapy cloth in order to prevent soiling.

Solid Particles:

Remove the excess soiling with ultimate care without diffusing. Remove the solid particle from the fabric surface with the help of a soft spatula. To remove dust, use a vacuum cleaner or a soft brush. The remaining stains should be removed by rubbing with a soapy cloth in circular motion.

Ball-point pen and similar difficult stains :

Dampen a clean cotton cloth in a white soap solution. Rub the stain off gently. Clean the surface with the damp cloth and leave the fabric for drying

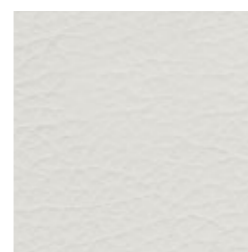
Alcohol derives

Petroleum and alkali based solvents should not be used for cleaning. After all cleaning processes, the drying should be done with a low temperature blow dryer in large circular motion or the fabric should be left for natural drying. After drying, misoriented and damaged piles should be fixed with a soft brush.

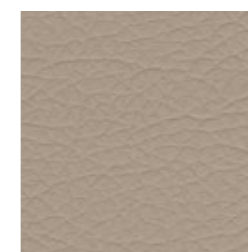
Valid for all colors. Red colors may have less color fastness to rubbing

NEW KING

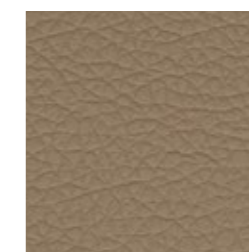
NEW KING



6



13742



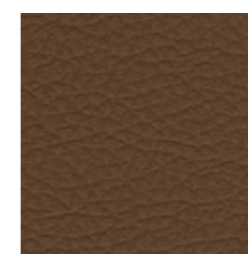
13743



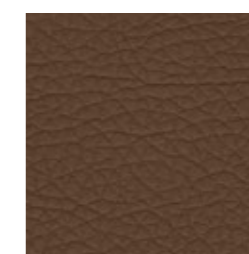
13719



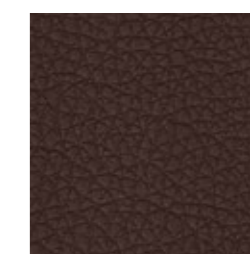
62501



13723



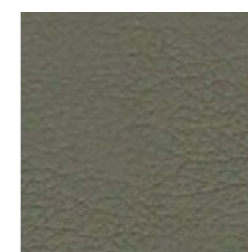
13724



13725



62503



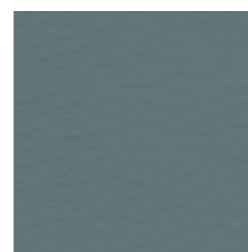
62504



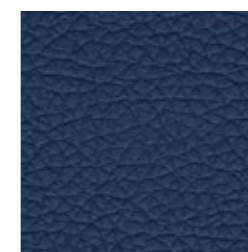
17563



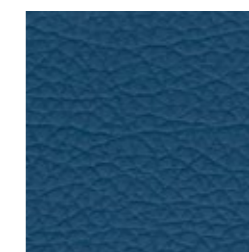
62502



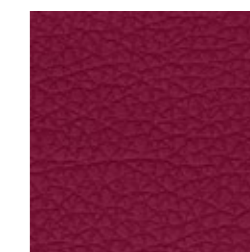
62505



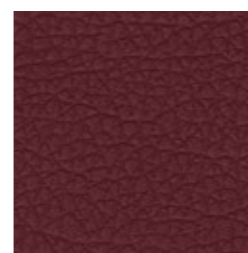
17566



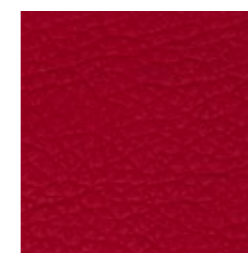
13824



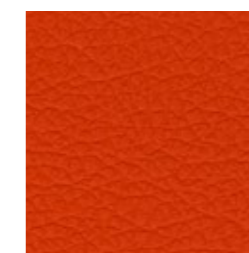
13823



17567



17565



17562

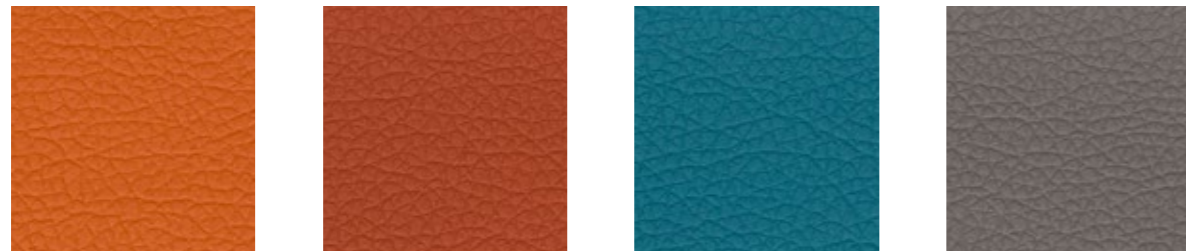


17561

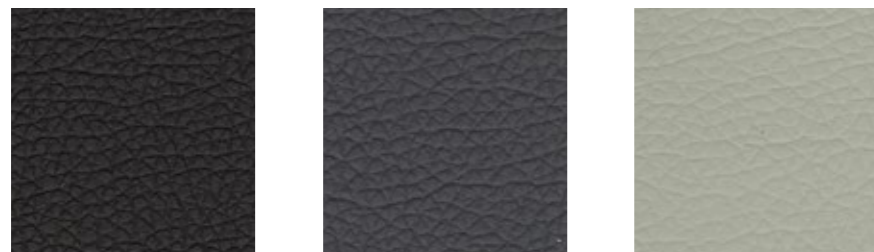
NEW KING



24327 13592 13822 13721



13722 24329 24328 17560



13727 17568 13717



13591

NEW KING

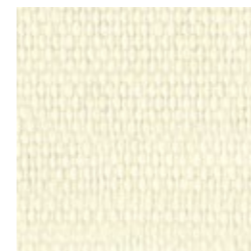
PRODUCT SPECIFICATIONS		
Technical Informations	Value	Test Method
TECHNICAL PROPERTIES		
Composition	% 76 Pvc %22 Polyester %2 PU	
Weight (gr/m2)	500 ± %5	TS 6450
Thickness (mm)	0,85 ± %5	ISO 2589
Width (cm)	138 / 140	TS 4119
PHYSICAL PROPERTIES		
Resistance to Abrasion (Martindale)	230.000	BS EN ISO 12947-2:1999&4:1999
Bursting Strength	>600 kPa	BS EN ISO 5470-1:1999
Resistance to Seam Slippage (N)	warp >250 weft >250	BS 3320:1998
Elongation Strenght (g)	Length 5803 g Across 2853 g	BS EN ISO 4674-1:1999 Pendulum Textest FX 3750: 136N
Light Fastness	+5	DIN EN ISO 105-B02:2002
FR STANDARTS		
United Kingdom	pass	BS 5852-1 : 1979

Producy Characteristics

Only valid for New King colour codes.
 Our Atlantis product line has flame retardancy feature.
 The cleaning process should start around the stain and held without dispersing the stain. It should be cleaned by gently wiping.
 All kinds of real and artificial leather should not be cleaned with bleach, detergent, coloured soap and similar materials and the product should not be exposed to direct sunlight.
 The product should be kept away from sources of strong light (spot, etc.) and heat.
 The using place and purpose of the product should be conventionally accepted places and purposes.
 No liability can be accepted for products that are not used properly.
 Leather products should not be kept in plastic packaging and humid places for a long time.
 Solid objects such as toys and jewellery may cause unintended starches on the material.
 Leather-covered products should be placed at least 50 cm away from heat sources (stoves, radiators, fireplaces, etc.).
 Otherwise, the leather may lose moisture which may cause undesired cracks.
 Impacts, scratches, etc. That may occur due to transportation and external. Should be considered out of warranty.
 Direct contact of pets with leather goods should be prevented.
 Direct contact of the products with high surface temperature (iron, etc.) with the leather may cause a damage.
 Protect the leather from harsh blows.
 Since ink on newspapers or magazines may get on the product and leave a permanent stain, do not leave it on the product.
 Especially if you sit with new jeans that give dark coloured paint on light coloured leather as an example, there may be stains.
 Note that this stain is not caused by the leather itself, but by the trousers that dye and colour.
 Weekly remove the dust or dirt on the surface of the product with a damp white and soft cotton cloth dampened with soapy water, rinse and dry when necessary.
 When coffee, tea, etc. Spilled: Use a highly absorbent white cloth or paper. Do not rub it immediately! Make sure the stain is absorbed by the cloth or paper.
 Wipe off the remaining moisture with a soft cloth in circular motions.
 Alcohol andd cologne are not recommended for difficult stains such as inki ballpoint peni lipstick. Wipe with warm soapy water with gentle circular movements.
 There may be colour and tone differences between different lots, arising from the nature of the production and within conventionally accepted limits. Please get a confirmation about stocks.

NEW SABINE

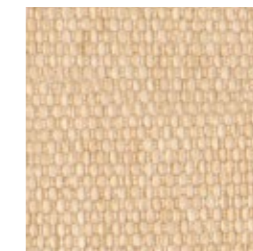
NEW SABINE



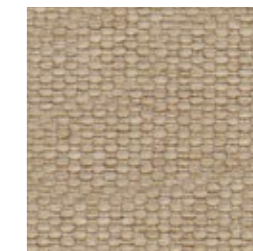
WHITE



IVORY



TAN



SAND



SILVER



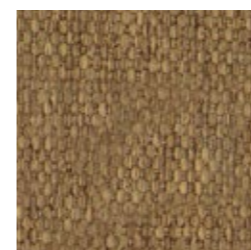
TAUPE



BROWN



STONE



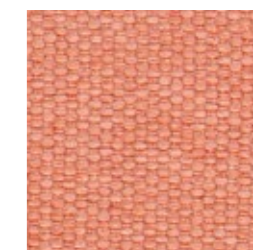
SADDLE



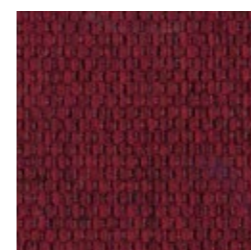
PALE BROWN



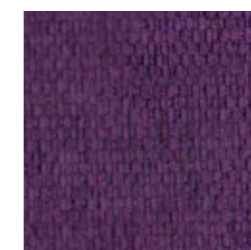
CHOCO



BEIGE RED



WINE



LILAC



PINK



CEMENT GREY



YELLOW



MAROC

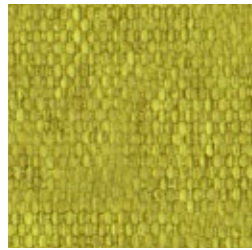


APRICOT

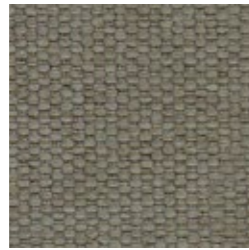


CHERRY

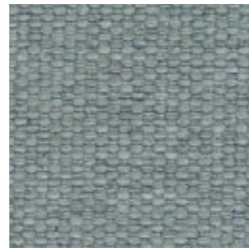
NEW SABINE



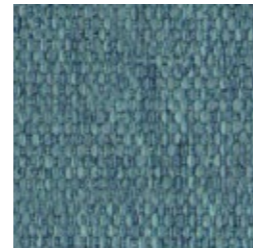
KIWI



GREEN GRAY



NORDIC



AQUA



BLUE



BLACK



ANTRASIT

NEW SABINE

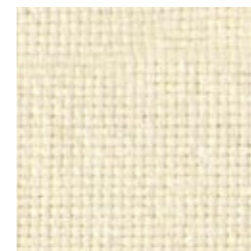
PRODUCT SPECIFICATIONS		
Technical Informations	Value	Test Method
TECHNICAL PROPERTIES		
Composition	% 100 polyester	
Weight (gr/m2)	380	ISO 3801
Width (cm)	137	ISO 22198
PHYSICAL PROPERTIES		
Resistance to Abrasion (Martindale)	>40.000	ISO 12947-2
Tear Strenght	warp 190 weft 154	ISO 13937-2
Resistance to Seam Slippage	warp 1-2 weft 0-1	ISO 13937-2
Pilling	4	ISO 12945-2
Color Fastness	Wet >5 Dry >5	ISO 105-X12

Producy Characteristics

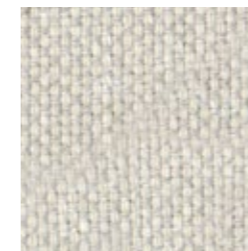
Only valid for New Sabine colour codes.
 Available to clean using neutral cleaning materials. Never use chemical solvents
 No use of detergents with the content of oxide whitener or bleach
 Within confirmed margins, there may be color shade differences among different lots, due to the nature of manufacture.
 No use the product under direct sunlight.
 Before cutting color, shade and fault checkings must be approved. In that case, even exceptionally, considering that there maybe shade difference on partially delivered products, during the delivery must be checked in advance cutting.
 If the upholstery is done without the subjected control, it may cause to aoid the expected look.
 During cutting and upholstery products shouldn' t be on folded position or pressed under any weight causing to straches.
 Never using scotch tape on the surface or back of the product. We ask to pay attention on that point, when the product is checked and wrapped in use. After the use, rest product must be tightly wrapped as roll not folded.
 In any kind of velvet, satin or chenille materials; fabric should not contact directly with the sponge. The sponge must be covered with interlining or cotton.
 Stains like oil, chewing gum, chocolate must not be removed with liquids (water, thinner, acetone or other solvents).
 For such stains dry cleaning methods are recommended.
 Vacuum cleaner can be used on daily and weekly basis.
 The Dark colours of this product, which is produced as ball painting, should be cleaned with a damp cloth after laying and afterwards, the paint crumbs that colud remain between the textures. This process can be done several times if necessary.
 The product has a teflon feature.
 Please get a confirmation about stocks.

NINO

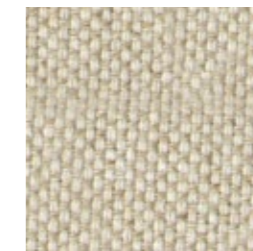
NINO



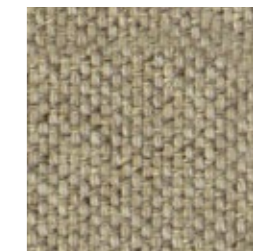
135-135



35-135



17-135



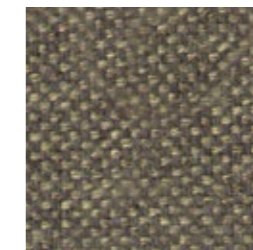
18-17



133-38



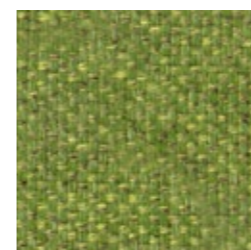
69-38



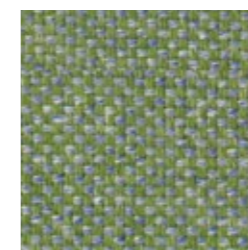
18-72



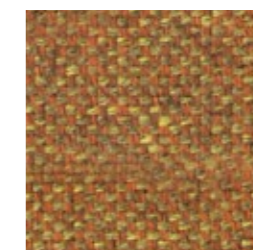
38-38



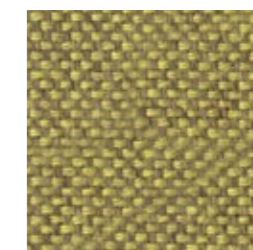
143-12



147-12



143-87



52-27



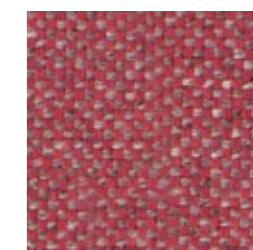
22-27



22-147



27-147



130-32



24-24



87-87



69-87

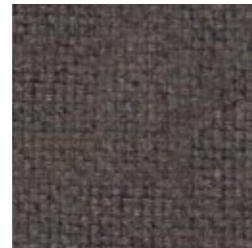


72-24

NINO



09-24



72-72



07-135



35-35

NINO

PRODUCT SPECIFICATIONS		
Technical Informations	Value	Test Method
TECHNICAL PROPERTIES		
Composition	% 100 Polyester	
Weight (gr/m2)	355	
Width (cm)	140	
PHYSICAL PROPERTIES		
Resistance to Abrasion (Martindale)	70.000	
Tear Strenght	warp 190 weft 154	
Pilling (2000 cycle)	5	
Color Fastness	Wet 4-5 Dry 4-5	
Fastness to Light	5	
FR STANDARTS		
Europe	pass	EN 1021& 1-2 (Optional)

Producy Characteristics

Only valid for Nino colour codes.

Available to clean using neutral cleaning materials. Never use chemical solvents

No use of detergents with the content of oxide whitener or bleach

Within confirmed margins, there may be color shade differences among different lots, due to the nature of manufacture.

No use the product under direct sunlight.

Before cutting color, shade and fault checkings must be approved. In that case, even exceptionally, considering that there maybe shade difference on partially delivered products, during the delivery must be checked in advance cutting.

If the upholstery is done without the subjected control, it may cause to aoid the expected look.

During cutting and upholstery products shouldn' t be on folded position or pressed under any weight causing to straches.

Never using scotch tape on the surface or back of the product. We ask to pay attention on that point,

when the product is checked and wrapped in use. After the use, rest product must be tightly wrapped as roll not folded.

In any kind of velvet, satin or chenille materials; fabric should not contact directly with the sponge. The sponge must be covered with interlining or cotton.

Stains like oil, chewing gum, chocolate must not be removed with liquids (water, thinner, acetone or other solvents).

For such stains dry cleaning methods are recommended.

Vacuum cleaner can be used on daily and weekly basis.

TIGER

TIGER



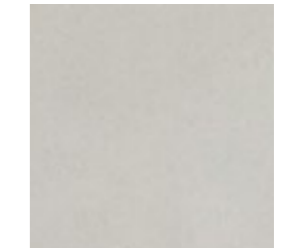
001



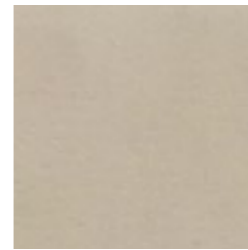
002



006



008



010



012



018



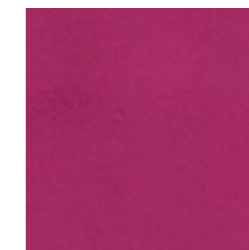
032



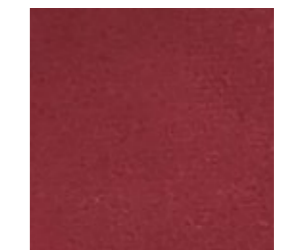
202



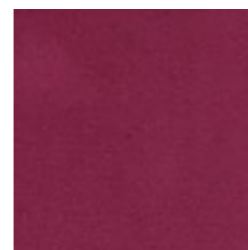
220



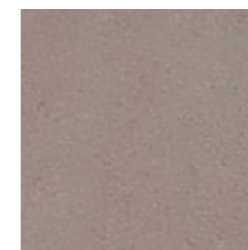
223



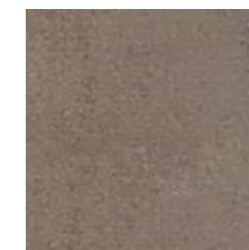
260



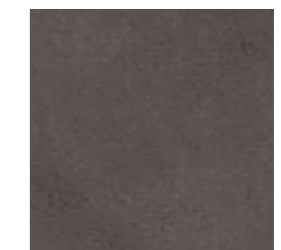
273



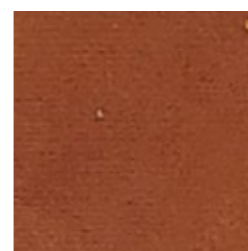
305



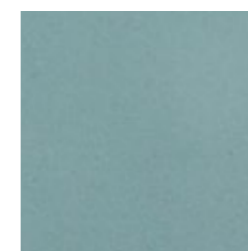
370



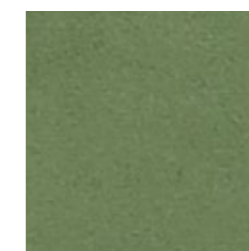
380



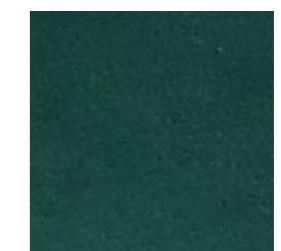
397



407

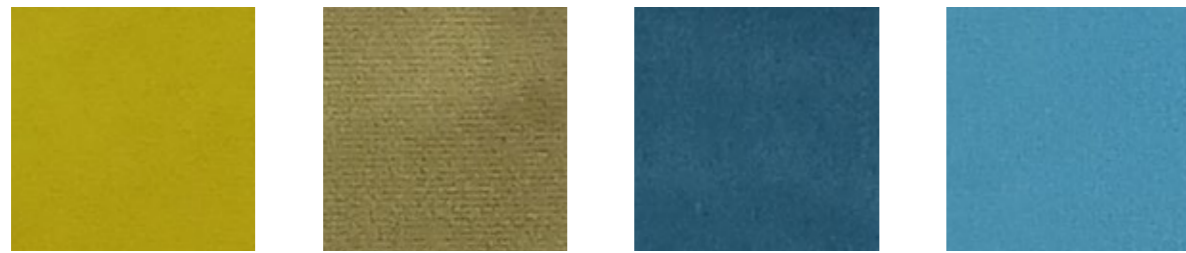


430

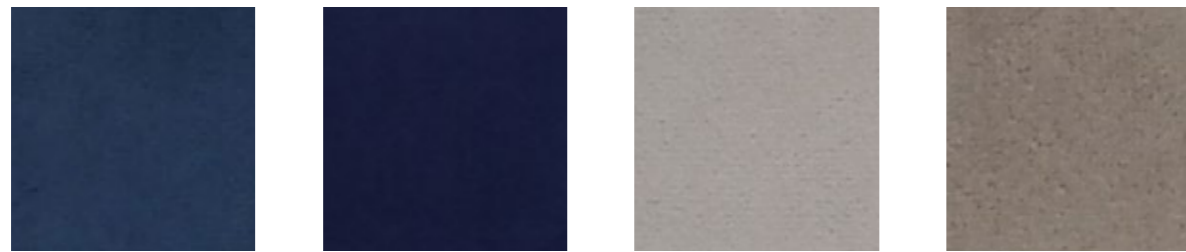


445

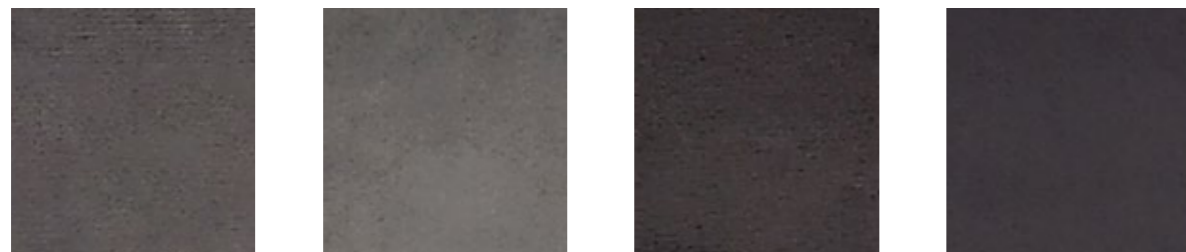
TIGER



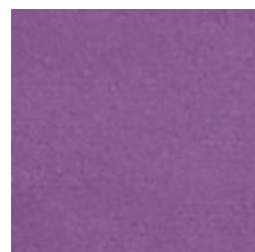
450 460 475 508



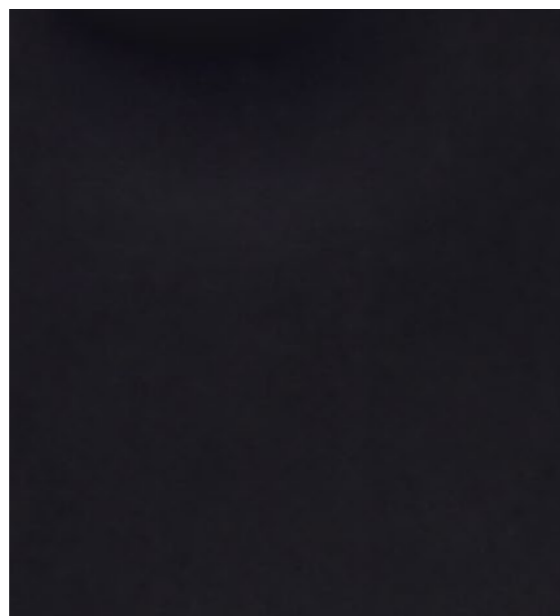
550 565 600 605



620 635 655 695



770



901

TIGER

PRODUCT SPECIFICATIONS		
Technical Informations	Value	Test Method
TECHNICAL PROPERTIES		
Composition	% 100 PES	
Weight (gr/m2)	300 ± 15	ISO 2286-2
Width (cm)	140 ± 3	
PHYSICAL PROPERTIES		
Resistance to Abrasion (Martindale)	>22.000	ISO 5470-02
Water Repellency	yes	
Easy Clean	yes	

Producy Characteristics

Liquid Stains:

Blot the liquid stain gently with a high-absorbent material. Pat dry the area gently with a dry material to remove the remaining humidity (cotton cloth,paper towel, etc...), If the stain from the spill remains, remove the stain with a soapy cloth without diffusing the stain. After each rubbing motion, refresh the clean soapy cloth in order to prevent soiling.

Solid Particles:

Remove the excess soiling with ultimate care without diffusing Remove the solid particle from the fabric surface with the help of a soft spatula. To remove dust, use a vacuum cleaner or a soft brush The remaining stains should be removed by rubbing with a soapy cloth in circular motion.

Ball-point pen and similar difficult stains:

Dampen a clean cotton cloth in a white soap solution. Rub the stain off gently. Clean the surface with the damp cloth and leave the fabric for drying

Alcohol derives:

Petroleum and alkali based solvents should not be used for cleaning. After all cleaning processes, the drying should be done with a low temperature blow dryer in large circular motion or the fabric should be left for natural drying. After drying, misoriented and damaged piles should be fixed with a soft brush.

Valid for all colors. Red colors may have less color fastness to rubbing

WHISPER

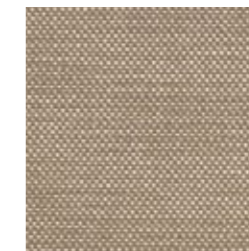
WHISPER



40492



40430



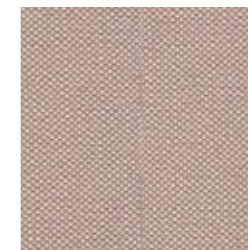
40619



42948



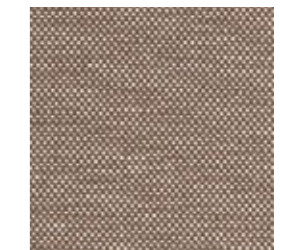
40603



42949



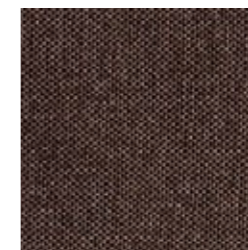
40411



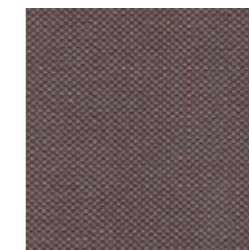
40471



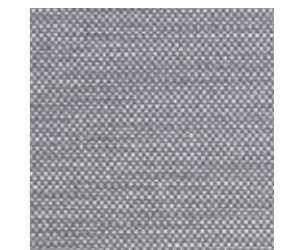
40612



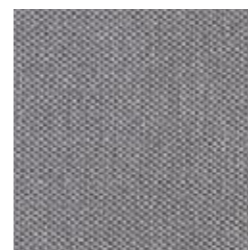
40434



40491



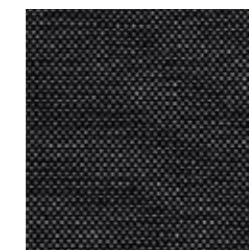
40413



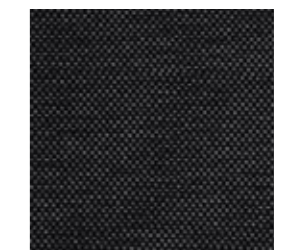
41941



40604



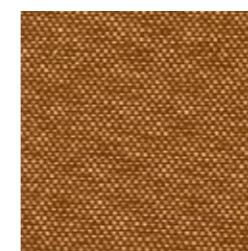
40415



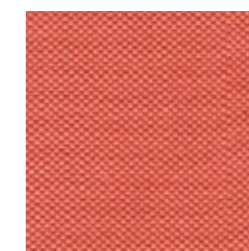
40435



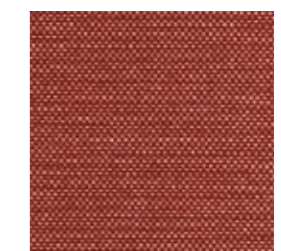
40605



43174

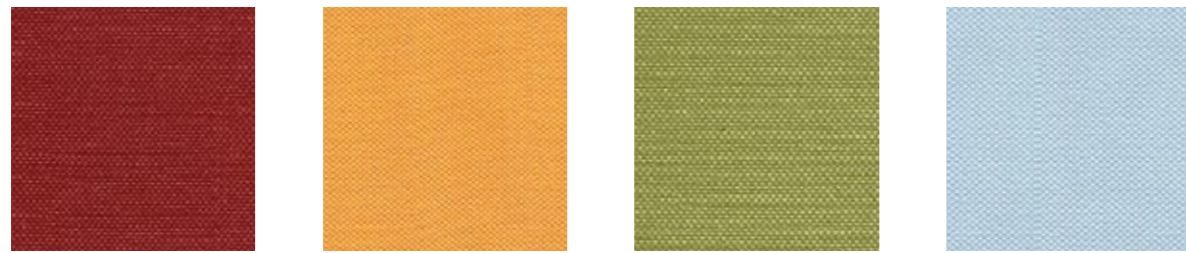


47810



42951

WHISPER

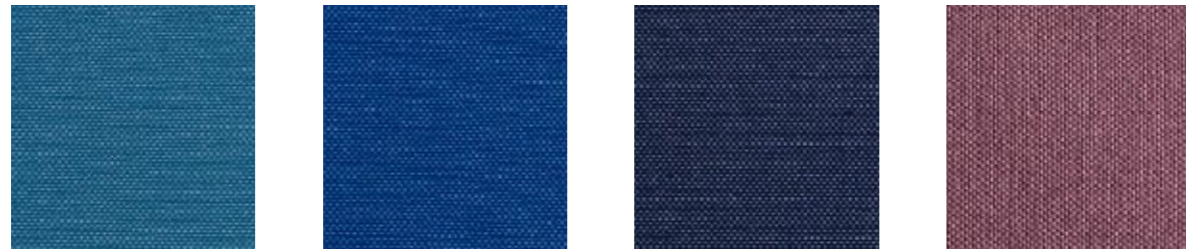


42950

45296

39130

47892

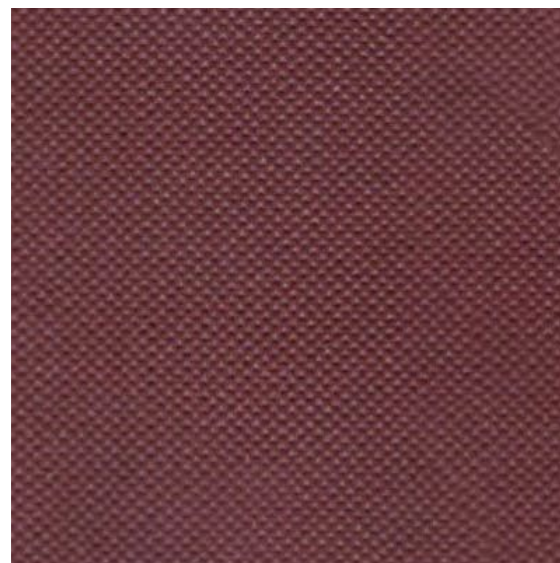


42953

39132

40606

41942



44505

WHISPER

PRODUCT SPECIFICATIONS		
Technical Informations	Value	Test Method
TECHNICAL PROPERTIES		
Composition	82%PVC/3% Acrylic PU/15%Polyester	EN 12127
Weight (gr/m2)	650	
Width (cm)	140 +- 3	
PHYSICAL PROPERTIES		
Resistance to Abrasion (Martindale)	300.000	ISO 12947-2
Weathering UV test	4	ISO 4892-2
Microbial and fungal resistance	degree 1	ISO 846/AATCC 147
Waterproof	Yes	EN 20811
FR STANDARTS		
France	M2	NFP 503,504,505 (optional)
Germany	B1	DIN 4102 (optional)
Italy	pass	UNI 9175 and UNI 9177 (optional)
Europe	pass	EN 1021-1,2
United Kingdom	Crib 5	BS 5852 (optional)
United Kingdom	pass	BS 5852 source 0, 1 cig and match
USA	pass	NFPA 260A/UFAC Class 1
USA	pass	CAL 117
Marine	pass	IMO FTPC P8
Aeronautical	pass	NY/NJ Port authority FAR Part 25.853 (optional)

Producy Characteristics

Care And Cleaning Instructions

Clean regularly with a damp cloth, use water with a mild soap, no aggressive nor abrasive detergents, no wax. This information is not a guarantee and does not relieve the user from the responsibility of the proper and safe use of the product Metaliks has no responsibility resulting from the use of such cleaning agents to the vinyl

Enviroment And Health:

- Oekotex 100 Class IV
- REACH Certified
- Phthalate Free
- Bromine Free No Halogenated FR Chemicals
- Non-Toxic
- No Bisphenol A (BPA)

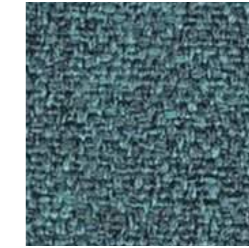
X2



Subtract
AK013



Multiply
AK014



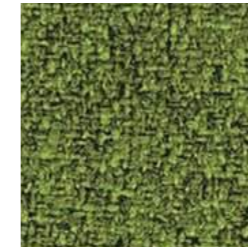
Polygon
AK002



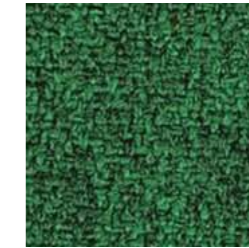
Divide
AK005



Percentage
AK016



Algebra
AK005



Fraction
AK003



Equation
AK004



Ratio
AK001



Value
AK006



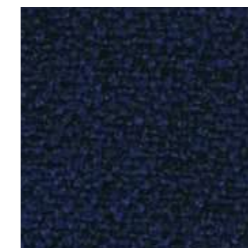
Maths
AK007



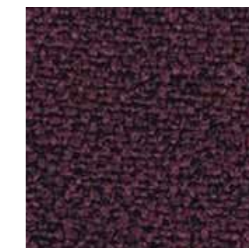
Calculus
AK008



Acute
AK009



Metric
AK010



Median
AK011



Add
AK012



Number
020



Postive
AK019



Arithmetic
AK018



Formula
AK017

PRODUCT SPECIFICATIONS		
Technical Informations	Value	Test Method
TECHNICAL PROPERTIES		
Application	Task Seating / Soft Seating	
Composition	100% Recycled Flame Retardant Polyester	
Weight (gr/m2)	310 g/m2 ±5% (434 g/lin.m ±5%)	
Width (cm)	140	
PHYSICAL PROPERTIES		
Abrasion Resistance (martindale)	≥100.000	BS EN ISO 12947-2:2016
Light Fastness	6	ISO 105 - B02
Fastness to Rubbing	Wet: 4 Dry: 4	ISO 105 - X12
Bleach Cleanable	colour change 4 for dilution factor 1:4 chlorine solution	ISO 105 E03
Guarantee	10 Years	
FR STANDARTS		
Europe	pass	EN 1021 - 1 (cigarette)
France	pass	EN 1021 - 2 (match)
United Kingdom	pass	BS 7176 Low Hazard
United Kingdom	pass	BS 5852 Ignition Source 5
United Kingdom	pass	BS 7176 Medium Hazard
Germany	B1	DIN 4102
Germany	Q1	ÖNORM B 3825 & A 3800-1
Italy	pass	UNI 9175

Product Characteristics

Cleaning

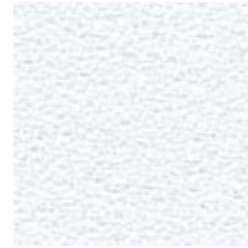
Vacuum regularly. Wipe with a damp cloth using a proprietary upholstery shampoo/soap. For deeper cleaning use steam, bleach, alcohol or professionally dry clean. Can be washed at 60°C.

Environmental

Certified to the EU Ecolabel, Certified to OEKO-TEX® Standard 100
 Certified to Indoor Advantage™ Gold, Made from 100% recycled polyester
 Non metallic dyestuffs

XTREME

XTREME



ADABO
YS165



Aruba
YS108



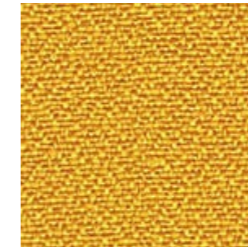
Sandstorm
YS071



Nougat
YS091



Sombrero
YS046



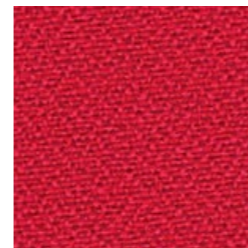
Solano
YS072



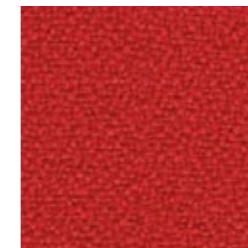
Tortuga
YS168



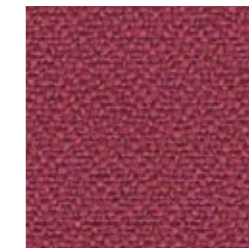
Lobster
YS076



Belize
YS105



Panama
YS079



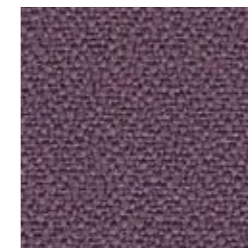
Diablo
YS101



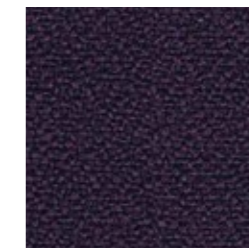
Tokara
YS136



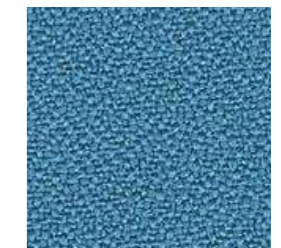
Tobago
YA030



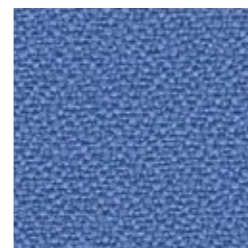
Bridgetown
YS102



Tarot
YS084



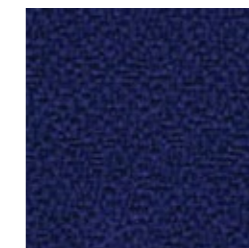
Parasol
YS073



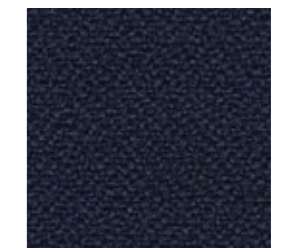
Bluebell
YS097



Honeymoon
YS035

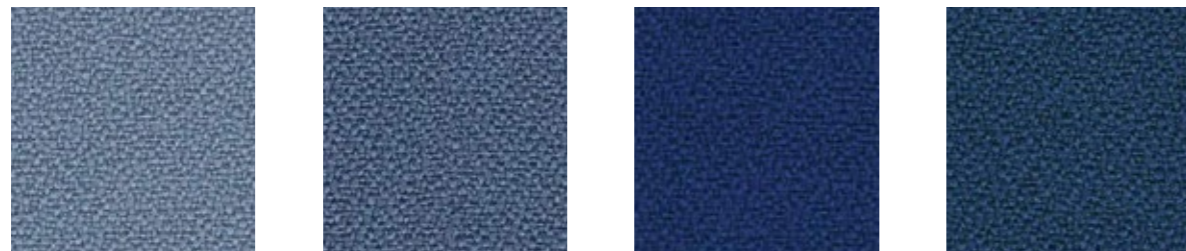


Ocean
YS100



Cayman
YS024

XTREME

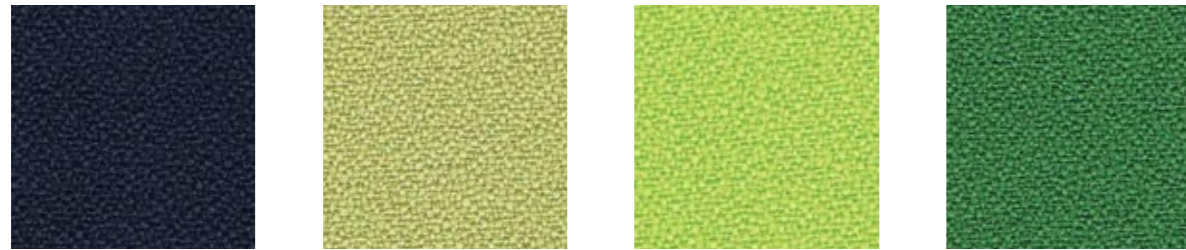


Steel
YS095

Martinique
YS004

Scuba
YS082

Curacao
YS005



Costa
YS026

Apple
YS096

Madura
YS156

Lombok
YS159



Appledore
YS077

Taboo
YS045

Slip
YS094

Campeche
YS074



Tonga
YS160

Windjammer
YS047

Krabi
YS141

Blizzard
YS081



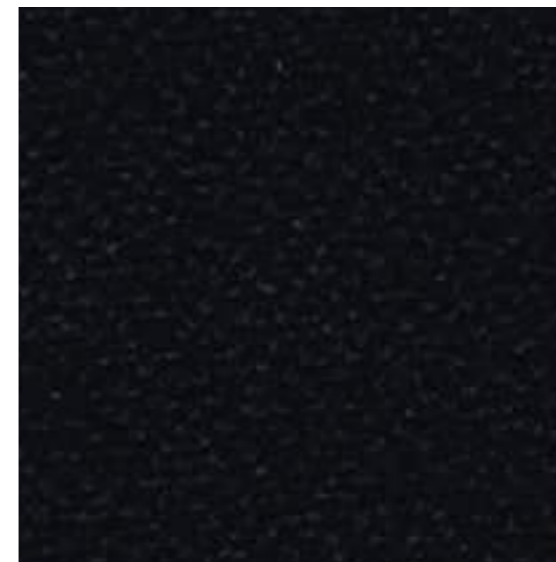
Rum
YS173

Osumi
YS171

Bonaire
YS172

Padang
YS145

XTREME



Havana
YS009

Cleaning

Vacuum regularly. Wipe with a damp cloth using a proprietary upholstery shampoo/soap. For deeper cleaning use steam, bleach, alcohol or professionally dry clean. Can be washed at 60°C.

Environmental

Certified to the EU Ecolabel, Certified to OEKO-TEX® Standard 100
 Certified to Indoor Advantage™ Gold, Made from 100% recycled polyester
 Non metallic dyestuffs

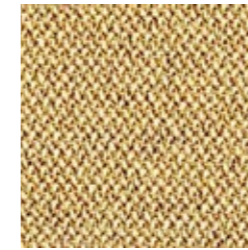
PRODUCT SPECIFICATIONS		
Technical Informations	Value	Test Method
TECHNICAL PROPERTIES		
Application	Task Seating	
Composition	100% Post-consumer Recycled Polyester	
Weight (gr/m2)	310 ±5% (434 g/lin.m ±5%)	
Width (cm)	140	
PHYSICAL PROPERTIES		
Abrasion Resistance (martindale)	≥100.000	BS EN ISO 12947-2:2016
Light Fastness	6	ISO 105 - B02
Fastness to Rubbing	Wet: 4 Dry: 4	ISO 105 - X12
Bleach Cleanable	colour change 4 for dilution factor 1:4 chlorine solution	ISO 105 E03
Guarantee	10 Years	
FR STANDARTS		
Europe	pass	EN 1021 - 1 (cigarette)
Europe	pass	EN 1021 - 2 (match)
United Kingdom	pass	BS 7176 Low Hazard
United Kingdom	pass	BS 5852 Ignition Source 5
United Kingdom	pass	BS 7176 Medium Hazard
United Kingdom	Class pass1	BS 476 Part 7
Germany	B1	DIN 4102
Germany	pass	ÖNORM B 3825 & A 3800-1
Italy	Classe 1 IM	UNI 9175
France	pass	NF D 60-013

ERA

ERA



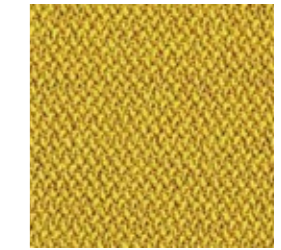
CSE30



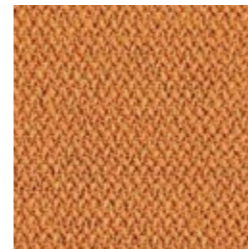
CSE31



CSE03



CSE32



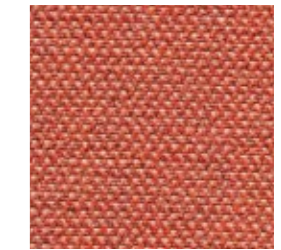
CSE27



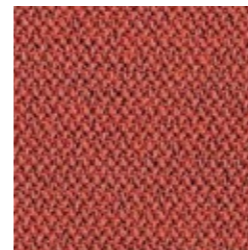
CSE25



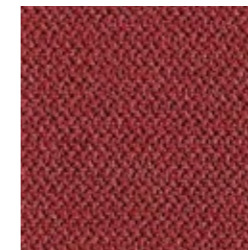
CSE05



CSE26



CSE29



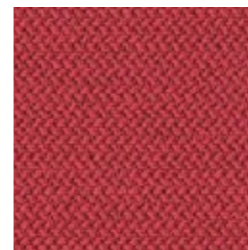
CSE28



CSE19



CSE24



CSE06



CSE17



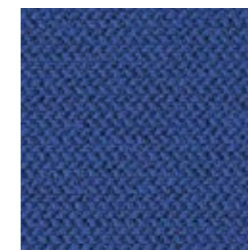
CSE09



CSE38



CSE08



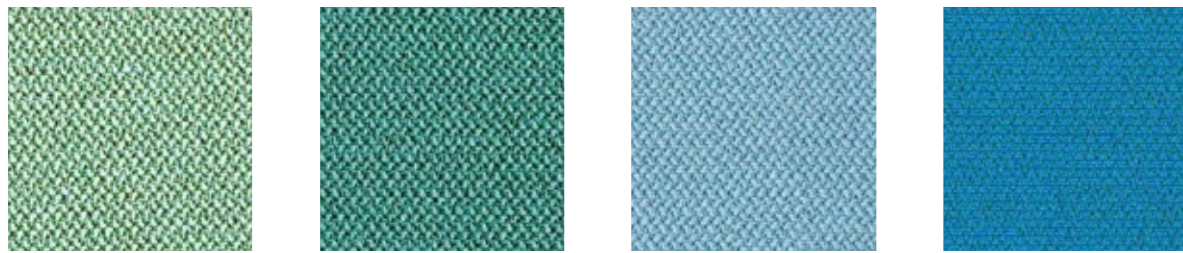
CSE12



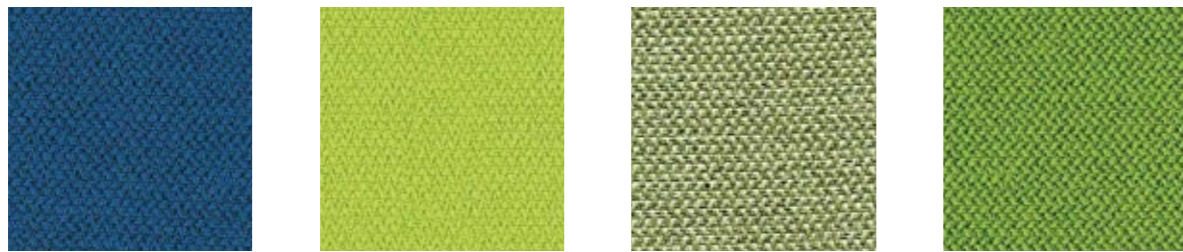
CSE42



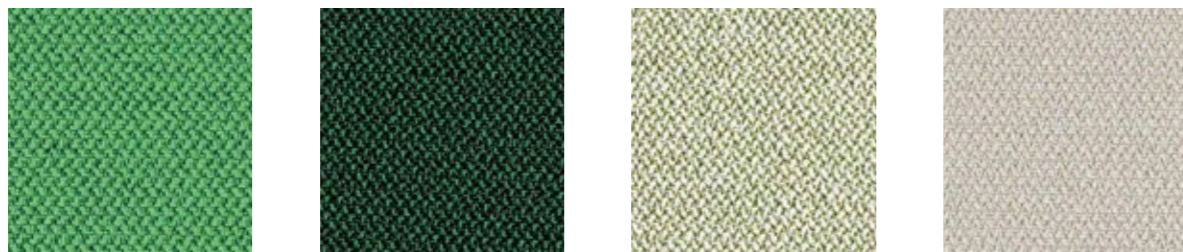
CSE40



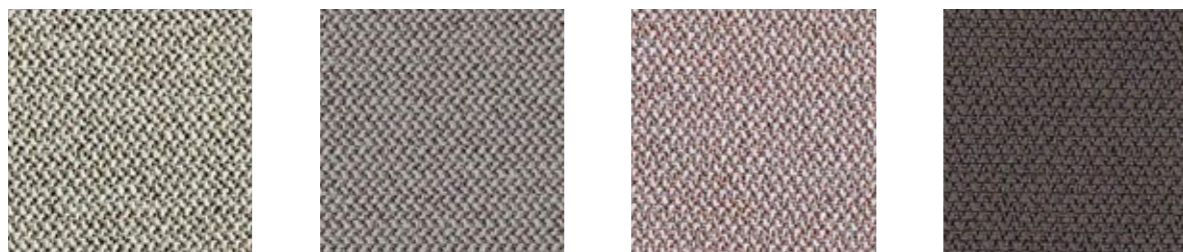
CSE36 CSE37 CSE20 CSE10



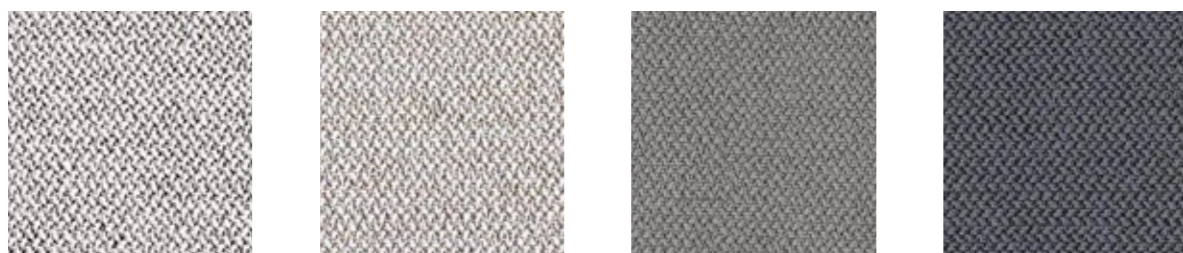
CSE15 CSE07 CSE34 CSE16



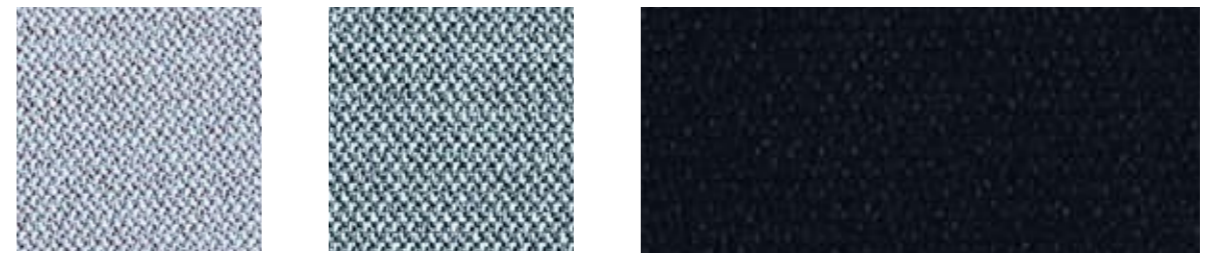
CSE18 CSE35 CSE33 CSE01



CSE45 CSE02 CSE23 CSE21



CSE46 CSE41 CSE11 CSE13



CSE39 CSE43



CSE44 CSE14

PRODUCT SPECIFICATIONS		
Technical Informations	Value	Test Method
TECHNICAL PROPERTIES		
Application	Task Seating	
Composition	100% Polyester	
Weight (gr/m2)	320 ±5%	
Width (cm)	140	
PHYSICAL PROPERTIES		
Abrasion Resistance (martindale)	≥100.000	BS EN ISO 12947-2:2016
Light Fastness	5	ISO 105 - B02
Fastness to Rubbing	Wet: 4 Dry: 4	ISO 105 - X12
Bleach Cleanable	colour change 4 for dilution factor 1:4 chlorine solution	ISO 105 E03
Guarantee	10 Years	
FR STANDARTS		
Europe	pass	EN 1021 - 1 (cigarette)
Europe	pass	EN 1021 - 2 (match)
United Kingdom	pass	BS 7176 Low Hazard
Europe	pass	EN 13501-1 Class B, s1, d0
Europe	pass	EN 13501-1 Class C, s1, d0

Product Characteristics

Cleaning

Vacuum regularly. Wipe with a damp cloth using a proprietary upholstery shampoo/soap. For deeper cleaning use steam, bleach, alcohol or professionally dry clean. Can be washed at 60°C.

Environmental

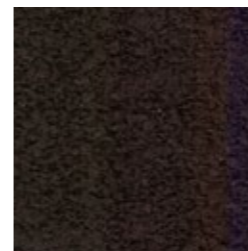
Certified to OEKO-TEX® Standard 100

Certified to Indoor Advantage™ Gold

Non metallic dyestuffs

TEDDY

TEDDY



02



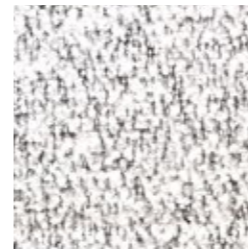
76



56



26



16



00



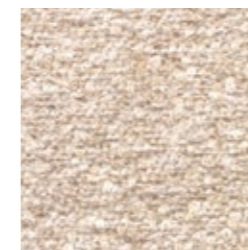
04



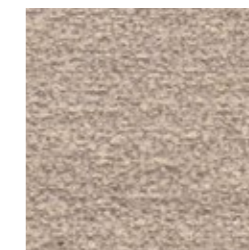
37



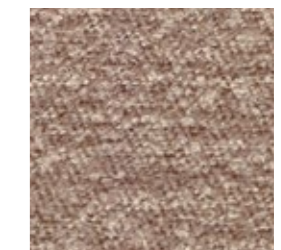
27



14



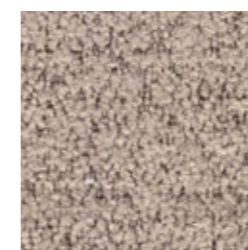
24



34



29



44



54



58



48



35

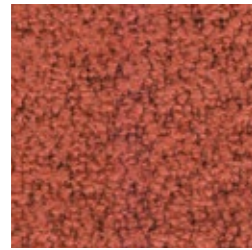


38



45

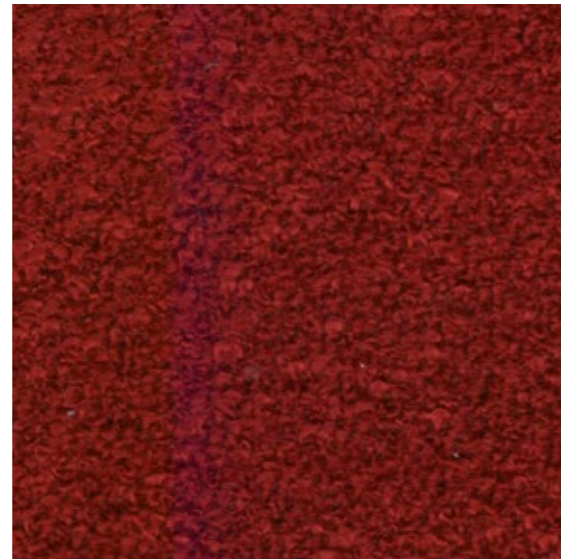
TEDDY



59



89



33

TEDDY

PRODUCT SPECIFICATIONS		
Technical Informations	Value	Test Method
TECHNICAL PROPERTIES		
Composition	75% Acrylic - % 25 Polyester	
Weight (gr/m2)	595	
Width (cm)	140 ± 3	
PHYSICAL PROPERTIES		
Resistance to Abrasion (Martindale)	>40.000	
Colour Fastness To Light (BW)	Wet 3-4 Dry 4-5	
Color Fastness To Rubbing (GS)	4-5	

Producy Characteristics

Liquid Stains:

Blot the liquid stain gently with a high-absorbent material. Pat dry the area gently with a dry material to remove the remaining humidity (cotton cloth,paper towel, etc....), If the stain from the spill remains, remove the stain with a soapy cloth without diffusing the stain. After each rubbing motion, refresh the clean soapy cloth in order to prevent soiling.

Solid Particles:

Remove the excess soiling with ultimate care without diffusing. Remove the solid particle from the fabric surface with the help of a soft spatula. To remove dust, use a vacuum cleaner or a soft brush The remaining stains should be removed by rubbing with a soapy cloth in circular motion.

Ball-point pen and similar difficult stains :

Dampen a clean cotton cloth in a white soap solution. Rub the stain off gently. Clean the surface with the damp cloth and leave the fabric for drying

Alcohol derives

Petroleum and alkali based solvents should not be used for cleaning. After all cleaning processes, the drying should be done with a low temperature blow dryer in large circular motion or the fabric should be left for natural drying. After drying, misoriented and damaged piles should be fixed with a soft brush.

ASPECT

ASPECT



Sahara
ACT13



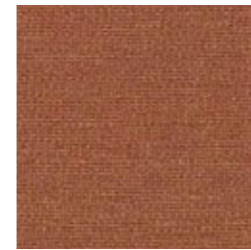
Yosemite
ACT14



Atacama
ACT01



Amalfi
ACT02



Meteora
ACT08



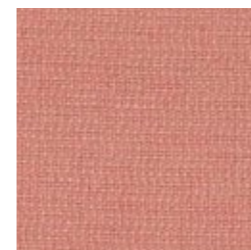
Gorkha
ACT12



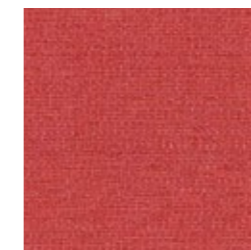
Zion
ACT09



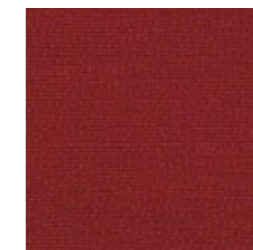
0000 Marrakech
ACT03



Petra
ACT07



Halong
ACT05



Cappadocia
ACT04



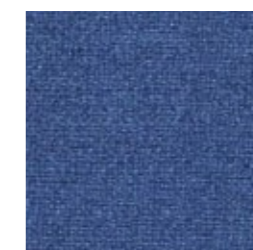
Calabria
ACT06



Matterhorn
ACT19



Molokai
ACT26



Everest
ACT27



Rainer
ACT24



Como
ACT22



Lucerne
ACT23



Penyghent
ACT20



Jasper
ACT21

ASPECT



Capones
ACT10



Serengeti
ACT16



Patagonia
ACT18



Catbells
ACT17



Palenque
ACT11



Bamburgh
ACT15



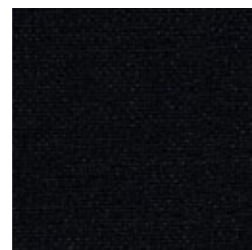
Dolomites
ACT28



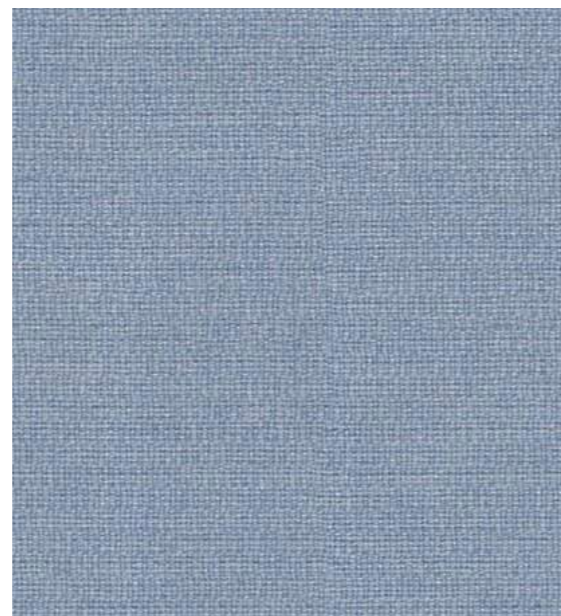
Malham
ACT29



Galapagos
ACT30



Aurora
ACT31



Otago
ACT25

ASPECT

PRODUCT SPECIFICATIONS		
Technical Informations	Value	Test Method
TECHNICAL PROPERTIES		
Composition	Task Seating / Soft Seating	
Environmental	75% Trevira® CS Flame Retardant Polyester 25% Polyester	
Weight (gr/m2)	325 ±5% (455 g/lin.m ±5%)	
Width (cm)	140	
PHYSICAL PROPERTIES		
Abrasion Resistance (martindale)	≥50.000	
Light Fastness	5	BS EN ISO 12947-2:1998
Fastness to Rubbing	Wet: 4 Dry: 4	ISO 105 - B02
Bleach Cleanable	colour change 4 for dilution factor 1:4 chlorine solution	ISO 105 - X12
Guarantee	10 Years	
FR STANDARTS		
Europe	pass	EN 1021 - 1 (cigarette), EN 1021 - 2 (match)
United Kingdom	pass	BS 7176 Low Hazard
United Kingdom	pass	BS 5852 Ignition source 5
United Kingdom	pass	BS 7176 Medium Hazard
Germany	B1	DIN 4102
Germany	B1	ÖNORM B 3825 & A 3800-1
France	pass	NF D 60-013
Italy	Classe 1 IM	UNI 9175

Producy Characteristics

Cleaning

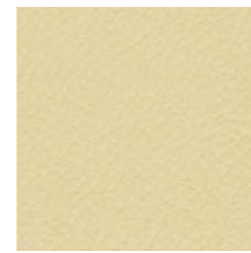
Vacuum regularly. Wipe with a damp cloth using a proprietary upholstery shampoo/soap. For deeper cleaning use steam,bleach, alcohol or professionally dry clean. Can be washed at 60°C.

Environmental

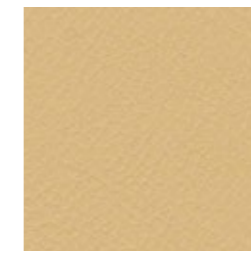
Certified to OEKO-TEX® Standard 100
 Certified to Indoor Advantage™ Gold
 Non metallic dyestuffs

VITA

VITA



ITA37



ITA43



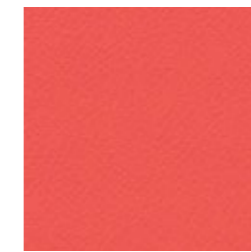
ITA03



ITA33



ITA41



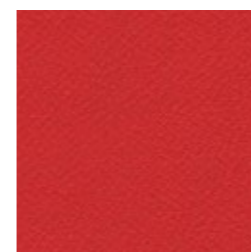
ITA35



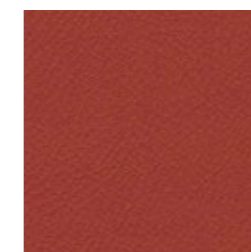
ITA05



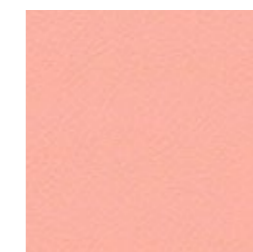
ITA52



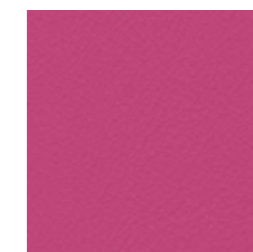
ITA08



ITA11



ITA51



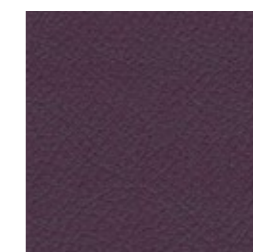
ITA34



ITA20



ITA50



ITA23



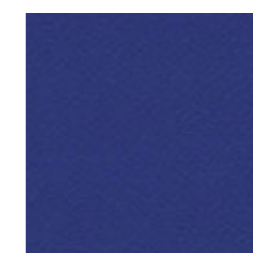
ITA49



ITA17



ITA55

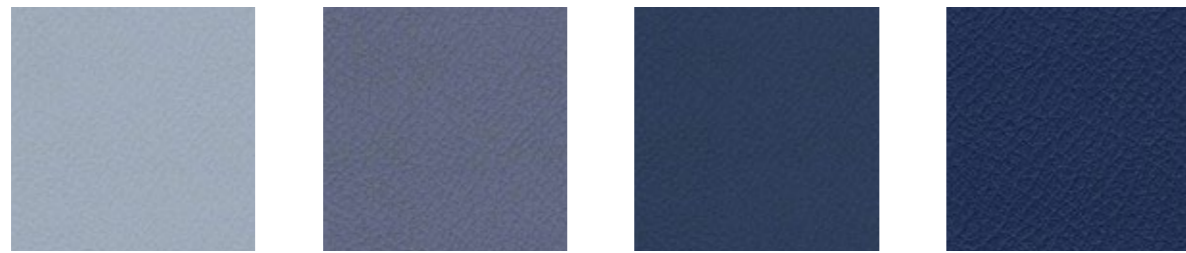


ITA53



ITA56

VITA



ITA36

ITA15

ITA54

ITA21



ITA22

ITA48

ITA32

ITA18



ITA16

ITA19

ITA40

ITA06

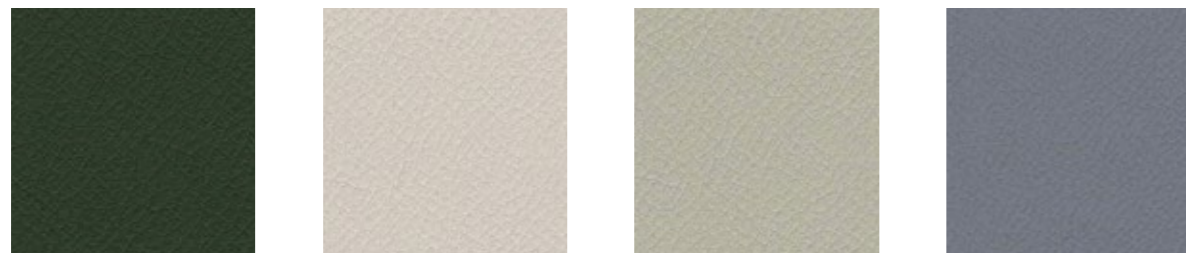


ITA09

ITA30

ITA01

ITA31



ITA29

ITA38

ITA42

ITA45

VITA



ITA04

ITA07

ITA44

ITA02

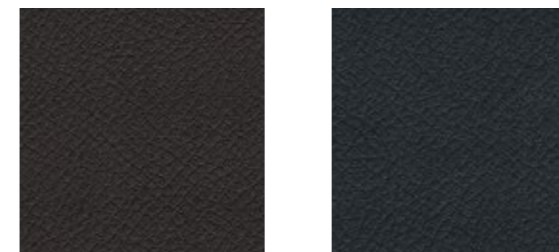


ITA46

ITA39

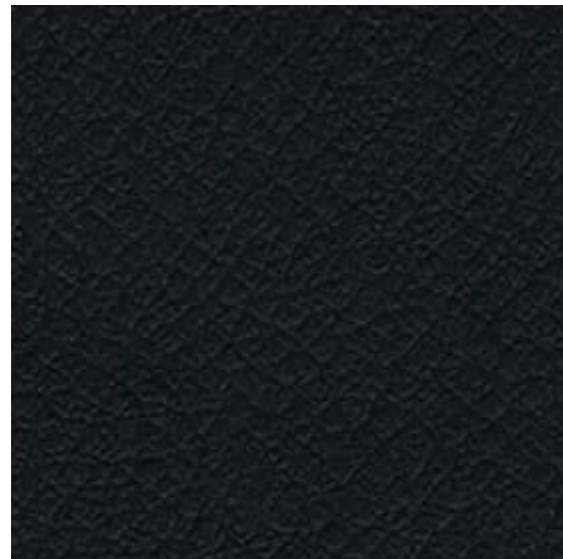
ITA10

ITA14



ITA13

ITA47



ITA12

PRODUCT SPECIFICATIONS		
Technical Informations	Value	Test Method
TECHNICAL PROPERTIES		
Application	Task Seating / Soft Seating	
Composition	Surface: 98% PVC, 2% PU Substrate: 100% Cotton	
Weight (gr/m2)	850 ±10% (1190 g/lin.m ±10%)	
Width (cm)	140	
PHYSICAL PROPERTIES		
Abrasion Resistance	100.000	BS EN ISO 5470-2: 2003
Light Fastness	6	ISO 105 - B02
Fastness to Rubbing	Wet: 4 Dry: 4	ISO 105 - X12
Waterproof	Hydrostatic head BS 3424 Part 26 > 1 metre	ISO 105 - X12
Bleach Cleanable	colour change 4 for dilution factor 1:4 chlorine solution	ISO 105 E03
Urea Resistance	BS 3424 Part 19 no significant deterioration after 24 hrs	BS 3424 Part 19
Anti-microbial		AATCC 147
Flexes (cycles)	400.000	ISO 7854: 1997 Method B
Guarantee	5 Years	
FR STANDARTS		
Europe	Pass	EN 1021 - 1&2 (cigarette & match)
Italy	Classe 1 IM	UNI 9175
United Kingdom	Pass	BS 7176 Low Hazard
United Kingdom	Pass	BS 5852 Ignition Source 5
United Kingdom	Pass	BS 7176 Medium Hazard
United Kingdom	Pass	BS 7176 Medium Hazard
United Kingdom	Class 1	BS 476 Part 7
United Kingdom	Pass	IMO FTP Code (Part 8)
United Kingdom	Pass	The Furniture and Furnishing (Fire Safety) Regulations 1988 (UK domestic cigarette and match)

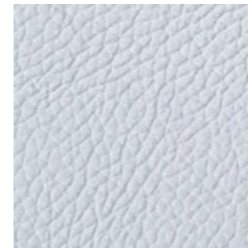
Producy Characteristics

Cleaning

Vacuum regularly. Wipe with a damp cloth using a proprietary upholstery shampoo/soap. For deeper cleaning use steam,bleach, alcohol or professionally dry clean. Can be washed at 60°C.

OCEAN

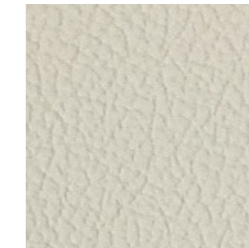
OCEAN



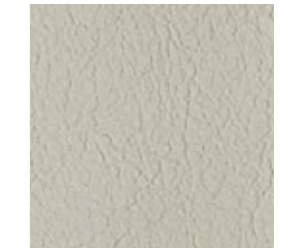
BIANCO 401



ZINC 434



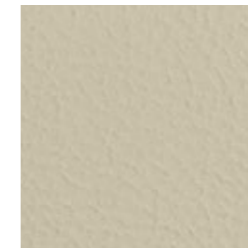
FORTUNA 436



PENICILENE 435



BETULA 433



GHIA 404



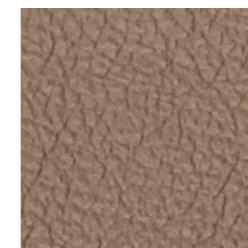
CREAM 406



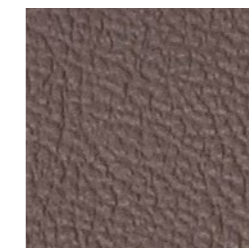
FURNO 408



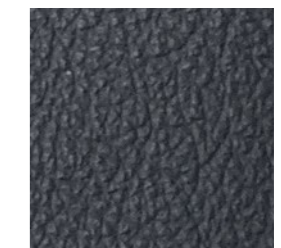
TAN 437



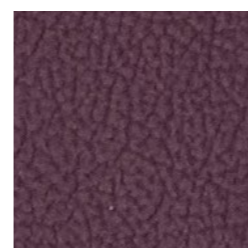
ANTILOP 438



NOUGAT 441



GRAY SHADOW 440



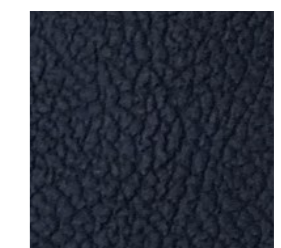
BORDO 431



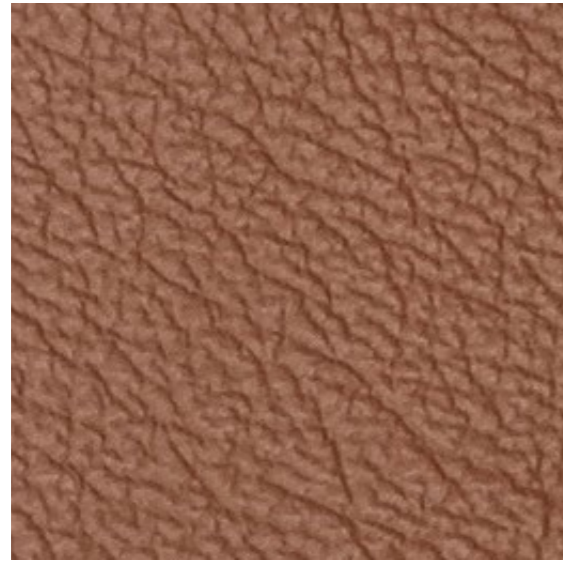
RED 417



T. MORO 420



NERO 423



SWAMP 439

PRODUCT SPECIFICATIONS		
Technical Informations	Value	Test Method
TECHNICAL PROPERTIES		
Thickness (mm)	0,8 - 1	ISO 2589
PHYSICAL PROPERTIES		
Tear Strength (n)	>=20	UNI EN ISO 3377-1
Colour Fastness to Rubbing Dry (grey scale)	>=4 500 cycles	UNI EN ISO 11640
Colour Fastness to Rubbing Wet (grey scale)	>=4 500 cycles	UNI EN ISO 11640
Colour Fastness to Rubbing Sweat (grey scale)	>=4 80 cycles	UNI EN ISO 11640
Flexing Endurance / Dry	No damage 50.000 cycles	UNI EN ISO 5402
Dinish Adhesion / Dry (n/cm)	>=2	UNI EN ISO 11644
Colour Fastness to Artificial Light Exposition (blue scale)	>=5 16.000 kj/sqm.	UNI EN ISO 105 B0
Cold Cracking	(-) 20 °C pass	EN ISO 17233
FR STANDARTS		
Burning Behaviour to Cigarette and Match Fami	Pass	IMO RES A652 (16)

Producy Characteristics

Bovine of European origin, corrected and embossed for enhanced grain consistency. Thickness is 0.8 – 1.0 mm. Average size of each hide is around 4.8 – 5.0 sqm. Finished using water based system. This product has a pigmented and protective top coat, with a soft handle and a silky matt finish.

ilex

ilex.com.tr

